

CERTIFIED CORNER RECORDATION

Corner E 1/4 Sec. 35 T. 36 N R. 28 W P.M., MT. Lincoln County

I. 1904 Original G.L.O. survey by Abraham L. Rinearson and Gordon L. Smith: Set a washed boulder, 15 x 12 x 9 ins., 10 ins. in the ground, for 1/4 Sec. Cor. marked 1/4 on NW. face, from which:

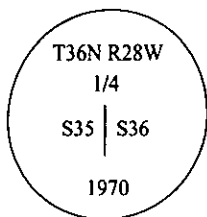
- A fir, 12 ins. diam., bears N 35°E, 39 lks. dist., mkd. 1/4 S 36 BT.
- A fir, 22 ins. diam., bears N 14°W, 18 lks. dist., mkd. 1/4 S 35 BT.

1970 B.L.M. remonumentation by Joseph E. French: The 1/4 sec. cor. of secs. 35 and 36, monumented with a washed boulder, 15 x 12 x 9 ins., firmly set, marked 1/4 on the W. face, and witnessed by the remains of the original bearing trees:

- A matured fir, 14 ins. diam, bears N 35°E, 39 lks. dist., mkd. 1/4 S 36 BT.
- A fir snag, 28 ins. diam., bears N 14°W, 18 lks. dist., mkd. 1/4 S 35 BT.

At the corner point

Set an iron post, 30 ins. long, 2 1/2 ins. diam., 24 ins. in the ground, with brass cap mkd.



from which new bearing trees:

- A fir, 7 ins. diam., bears S 73 3/4°E, 22 lks. dist., mkd 1/4 S 36 BT.
- A fir, 9 ins. diam., bears N 62°W, 39 lks. dist., mkd 1/4 S 35 BT.

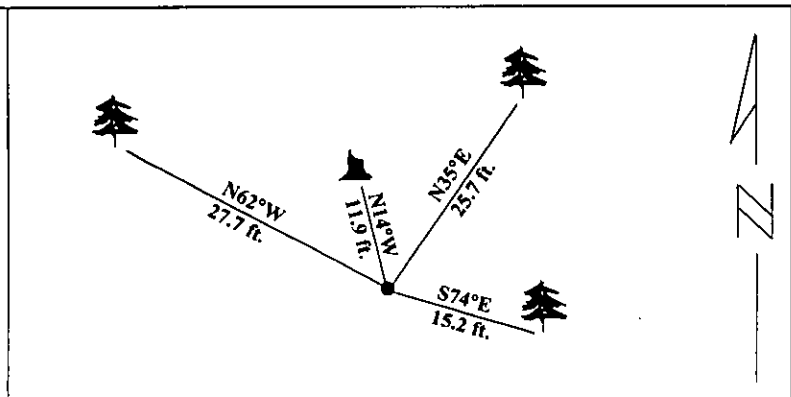
Bury the original stone alongside the iron post.

II. Found a 2 1/2 in. diam. iron pipe, firmly set, with a 3 1/4 in. diam. brass cap, 3 ins. above ground, mkd. as shown above, from which:

- A fir, 19 ins. diam., bears N 35°E, 25.7 ft. (39 lks.) dist., with visible scribing. (G.L.O.)
- A fir, 10 ins. diam., bears S 74°E, 15.2 ft. (23 lks.) dist., with healed face. (B.L.M. rec. 22 lks.)
- A fir, 13 ins. diam., bears N 62°W 27.7 ft. (42 lks.) dist., with healed face. (B.L.M. rec. 39 lks.)
- A fir stump, 23 ins. diam., bears N 14°W, 11.9 ft. (18 lks.) dist., with visible scribing. (G.L.O.)

III. Painted red bands around the bearing trees and attached Land Survey Monument and Bearing Tree signs.

Magnetic Declination: 20° East.



SKETCH OF CORNER

CERTIFICATION  
I, Thomas M. Hommel  
certify the information shown herein is true and correct.

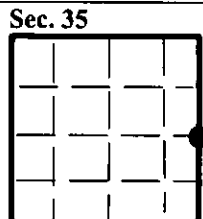
Signature Ground Party Chief  
I, Ronald A. Pearson  
certify that this Corner Record correctly represents work performed by me or under my direction in compliance with the "Corner Recordation Act" (70-22-101, et seq., M.C.A.)

Signature of Surveyor & Seal  
Date: 1/26/96  
Reg. No.: 9008LS  
Employer U.S. FOREST SERVICE



Office of Clerk and Recorder, County of LINCOLN. This "corner record" was filed for record on AUG21,1997 was noted on the cross-index plat and is assigned page No. 9905, in book No. CORAL M. CUMMINGS By DAB

County Official



• - corner this sheet