

CERTIFIED CORNER RECORDATION

Corner SE SEC. COR. Sec. 35 T. 36 N R. 28 W P.M., MT. Lincoln County

I. 1903 G.L.O. original survey of the South bdy. of T36N R28W by A. L. Rinearson et al: Set a stone and four bearing trees.

- A tamarack, 6 ins. diam., bears N 83°45'E, 59 lks. dist., mkd. T36N R28W S36 BT.
- A fir, 5 ins. diam., bears S 60°E, 45 lks. dist., mkd. T35N R28W S1 BT.
- A fir, 16 ins. diam., bears S 36 1/2°W, 29 lks. dist., mkd. T35N R28W S2 BT.
- A fir, 14 ins. diam., bears N 64°W, 78 lks. dist., mkd. T36N R28W S35 BT.

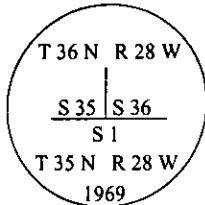
1930 Retracement and Resurvey of the South bdy. of T.36N., R.28W. by William R. Bandy et al: The cor. of secs. 1, 2, 35 and 36, which is a limestone 10 x 6 x 10 ins. above ground, firmly set, marked and witnessed as described in the official record. This corner will hereafter refer to secs. 35 and 36 only, therefore I erase the markings on the SE. and SW. bearing trees.

1969 B.L.M. remonumentation by Roy G. Leedy: The cor. of Tps. 36 N., Rs. 27 and 28 W. monumented with a limestone, 14 x 14 x 6 ins., firmly set, mkd. 6 notch on the N., E., S., and W.. edges, and witnessed by the remains of the original bearing trees:

- A fir, 14 ins. diam., bears N 14 3/4°E, 48 lks. dist., mkd. 36N R27W.
- A stump, bears N 64°W, 42 lks. dist., mkd. 8 W S36 BT.

At the corner point

Set an iron post, 30 ins. long, 2 1/2 ins. diam., 24 ins. in the ground., with brass cap marked:



from which the new bearing trees:

- A fir, 13 ins. diam., bears N 73°W, 88 lks. dist., mkd. T36N R28W S36 BT.

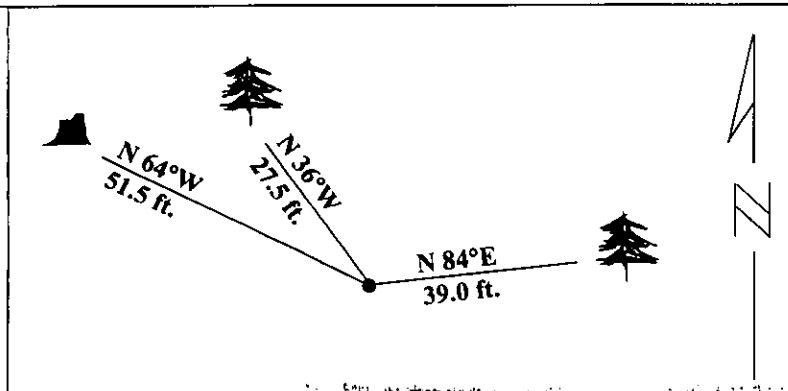
Bury the original stone alongside the iron post.

II. Found an iron pipe., 2 1/2 ins. diam., 14 ins. above ground, firmly set, with a 3 1/4 in. daim. brass cap mkd. as shown above, from which:

- A larch, 10 ins. diam., bears N 84°E, 39.0 ft. (59 lks.) dist., mkd. with a healed face.
- A stump, bears N 64°W, 51.5 ft. (78 lks.) dist., mkd. 7 N R 28 W.
- A fir, 7 ins. diam., bears N 36°W, 27.5 ft. (41.6 lks.) dist., mkd. with visible scribe marks.

Painted red bands around the bearing trees and attached Land Survey Monument and Bearing Tree signs.

Magnetic Declination: 20° East.



SKETCH OF CORNER

CERTIFICATION

I, Thomas M. Hommel
certify the information shown herein is true and correct.

Signature Ground Party Chief

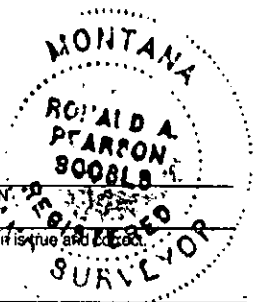
I, Ronald A. Pearson
certify that this Corner Record correctly represents work performed by me or under my direction in compliance with the "Corner Recordation Act" (70-22-101, et seq.; M.C.A.)

Signature of Surveyor & Seal

Date: 1/30/96

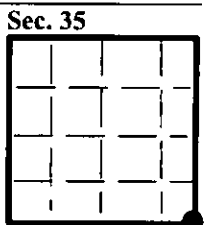
Reg. No.: 9008LS

Employer U.S. FOREST SERVICE



Office of Clerk and Recorder, County of LINCOLN. This "corner record" was filed for record on AUG21,1997 was noted on the cross-index plat and is assigned page No. 9904 in book No. CORAL M. CUMMINGS By DLB

County Official



• - corner this sheet

Cross Index No Z-21 T. 36N R. 28W P.M.