

CERTIFIED CORNER RECORDATION

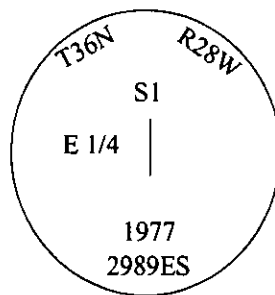
Corner E 1/4 Sec. 1 T. 36N R. 28W P.M., MT Lincoln County

- I. 1904 Resurvey and Reestablishment Record by Abraham L. Rinearson et. al.: Set a fir post, 3 ft. long, 3 ins. square, 24 ins. in the ground, for 1/4 sec. cor. of sec. 1, mkd. "1/4 S1" on W. face.

Established two bearing trees:

- A pine, 8 ins. diam., bears N77 1/2°E, 62 lks. dist., mkd. "1/4 S6 BT".
A pine, 14 ins. diam., bears S57°W, 121 lks. dist., mkd. "1/4 S1 BT".

1977 & 1981 Certified Corner Recordations by D.K. Marquardt, Registration No. 2989 ES: No evidence of original record found, set by record distance from the W 1/4 cor. of sec. 6, T36N R27W, a pipe, 36 ins. long, 2 in. diam., 28 ins. in the ground, mkd. as shown below:



Established two new bearing trees:

- A pine, 6 ins. diam., bears S34°E, 32.7 ft. dist., mkd. "E 1/4 S1 BT".
A pine, 10 ins. diam., bears N81°W, 56.3 ft. dist., mkd. "E 1/4 S1 BT".

See Certificate of Survey No.s 388 and 541 for reference to the corner.

- II. Found a 2 in. diam. iron pipe, firmly set, protruding 3 ins. above the ground, with a 2 1/2 in. diam. brass cap, mkd. as described above.

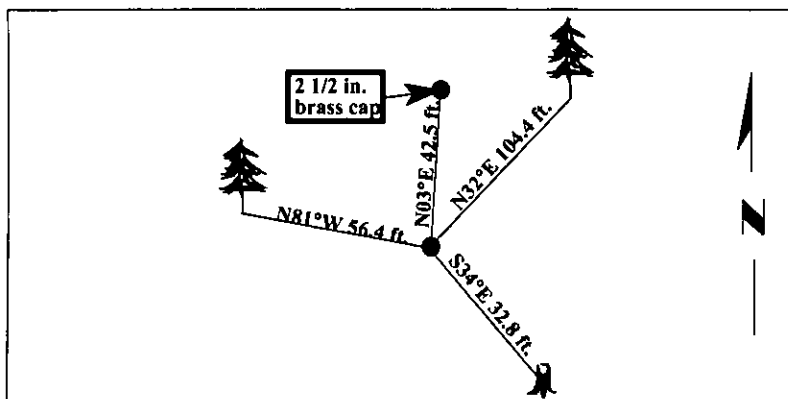
from which:

- An aluminum cap, for W 1/4 S6, (T36N R27W), bears N03°E, 42.5 dist. from the corner. (GLO-record distance to the W1/4 of sec. 6 is 42.9 ft.)
A pine, 13 ins. diam., bears N32°E, 104.4 ft. dist., with visible scribe. (W 1/4 S6 BT)
A broken stump, bears S34°E, 32.8 ft. dist., with a healed face. (1977-record)
A pine, 14 ins. diam., bears N81°W, 56.4 ft. dist., with a healed face. (1977-record)

Corner falls approximately 16 ft. of centerline of road.

- III. Painted bearing trees and attached Land Survey Monument and Bearing Tree signs.

Magnetic Declination: 20° East.



SKETCH OF CORNER

CERTIFICATION

I, Mark Federman
certify the information shown herein is true and correct.

I, Ronald A. Pearson
certify that this Corner Record correctly represents work performed by me or under my direction in compliance with the "Corner Recordation Act" (70-22-101, et seq., M.C.A.)

Signature of Surveyor & Seal

Date: 04/10/97

Reg. No.: 9008LS

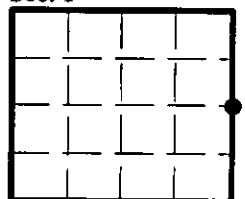
Employer: U.S. FOREST SERVICE

Office of Clerk and Recorder, County of LINCOLN. This "corner record" was filed for record on JULY 31, 1997 was noted on the cross-index plat and is assigned page No. 9866 in book No. _____

CORAL M. CUMMINGS

County Official

Sec. 1



• - corner this sheet