

# CERTIFIED LAND CORNER RECORDATION

Original Record 1903  
 80.00 Set a washed boulder 14x12x7 ins. 9 ins. in the ground for cor. of secs. 4, 5, 32 and 33, marked with 4 notches on E. and 2 notches on W. edge; from which A pine, 6 ins. diam., bears N. 16° E., 51 lks. dist., (down at 40') marked T 36 N R 28 W., S 33 B T A pine, 5 ins. diam., bears S. 79½° E., 47 lks. dist., marked T 35 N R 28 W S 4 B T (gone) a fir, 8 ins. diam., bears S. (stump) 63¼° W., 81 lks. dist., marked T 35 N R 28 W S 5 B T A pine, 30 ins. diam., bears N. 39° W., 27 lks. dist., marked T 36 N R 28 W S 32 B T (stump)

1931 This corner will hereafter refer to secs. 32 and 33 and cor. No. 2 of H.E.S. No. 278, therefore, I erase the markings on the SE. and SW. bearing trees referring to secs. 4 and 5 only, and marked a new one as follows: A fir, 12 ins. diam., bears N. 80¼° W., 25 lks. dist., marked T 36 N R 28 W S 32 B T.

## DESCRIPTION OF MONUMENT AND ACCESSORIES ESTABLISHED TO PERPETUATE THE ORIGINAL LOCATION OF THIS CORNER:

Date of work: 11/6/66

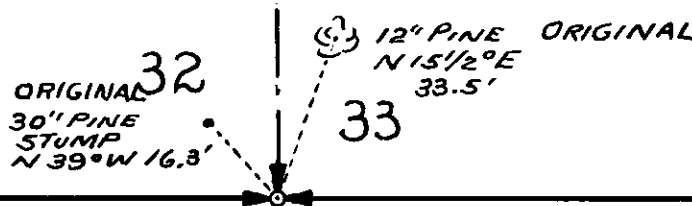
For evidence found see reverse side

We set a 2" pipe 30" long 18" in ground with brass cap marked  
 T 36 N R 28 W  
 32 1 33 (orig. stone alongside)  
 -1931

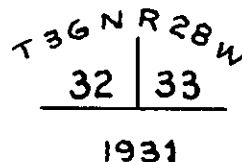
From which a 30" pine stump-sound and legible bears N 39° W 16.3' marked T 36 N R 28 W S 32 B T (Original)  
 A 12" pine bears N 15½ E 33½' (original) Tagged this with Std. BIM  
 B T Sign

## SKETCH, WITH COURSE AND DISTANCE TO ADJACENT CORNERS IF DETERMINED IN THIS SURVEY. (MAY SKETCH OR PASTE REPRODUCTION ON REVERSE SIDE.)

Twp. 36 N R. 28 W  
 Twp. 35 N R. 28 W



Brass Cap Marked Thus →



Surveyor's Seal

I, \_\_\_\_\_  
 certify that the information shown herein is true and correct.

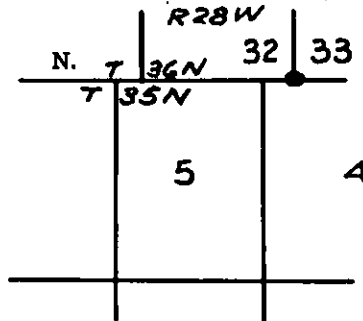
Signature of Ground Party Chief

I, J. W. Ninneman  
 certify that I have carefully performed or reviewed the work done on the diagrammed corner as reported on this recordation form and approve the same.

*J. W. Ninneman*  
 Signature of Surveyor

#534 ES  
 Registration Number

## DIAGRAM OF CORNER:



● = Corner recorded on the sheet

Office of Clerk and Recorder, County of Lincoln

This "corner record" was filed for record on the 2nd day of August 1966, was noted on the cross-index plat and is

assigned page No. 54, in book No. 1

ELEANOR L. VAUGHN, By: *Eleanor L. Vaughn*  
 County Official Deputy.

Found a stone 8x6x4 - 5" above ground marked 2 notches on West-  
2 HES 278 on South

Also a 30" pine stump marked as reported bears N 39° W 16.3'-

An 18" fir-marks erased bears S 63 $\frac{1}{4}$ ° W 53.2'-

A 12" pine N 15 $\frac{1}{2}$ ° E 33.5'

An 18" larch-cut down-lying as fallen bears N 29° E 40'- apparently an  
early B T.- partly legible

A 14" pine windfall N 79 $\frac{1}{4}$ ° W 15' marked 2 H E S 278 T 36 N R 28 W S 32 B T

Found also a cross chiseled on top of a boulder in place 2.2 ft. S E  
of corner

STATE OF MONTANA  
COUNTY OF LINCOLN  
Filed this 27th day of August  
at 10:10 AM A. D. 1964  
By Edward J. Hargrave County Clerk  
Wade Hargrave Deputy