

## INSTRUCTIONS

1. Original and/or subsequent record used to evaluate the corner position.
2. Description of evidence found, note discrepancies in the record, state method of establishing lost or obliterated corners.
3. Description of monument and accessories set to perpetuate the corner position.
4. Sketch of corner, show all pertinent data which can best be shown in a sketch example, corner marking, topography ties, position of accessories, etc.
5. Certification must be signed and sealed by Registered Land Surveyor in State of Montana.
6. Fill in Cross Index & Section Diagram at bottom of sheet.

## CERTIFIED CORNER RECORDATION

Corner C-1/4 Sec. 23 T. 36N R. 28W P.M.M. Lincoln County

I. -None

II. Found 1" pipe set by D.K. marquardt, E.S. 2989, per Certificate of Survey No. 118.

III. Set a 2-1/2" x .24" post with 3" alum. cap for corner position.

1" pipe bears S.13°31'E., 1.14'

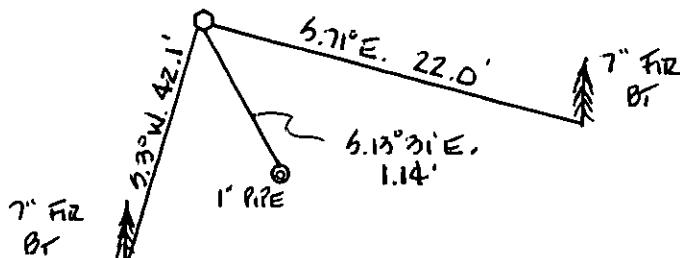
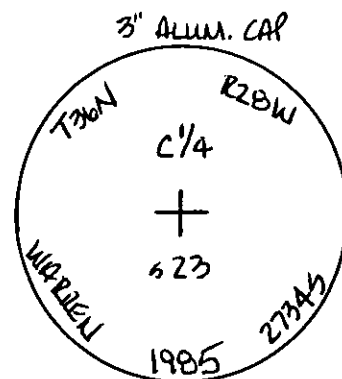
Established BT's as follows:

7" fir bears S.71°E., 22.0', scribed C-1/4 S23 BT

7" fir bears S.3°W., 42.1', scribed C-1/4 S23 BT

Posted BT, Attention, and Land Monument signs; painted blazes red; drove steel post in ground along side of corner monument.

For monument location, see the Certificate of Survey on file.



SKETCH OF CORNER

## CERTIFICATION

I, \_\_\_\_\_  
certify the information shown herein is true and correct.

Signature Ground Party Chief

H. Gene Warren

I, \_\_\_\_\_  
certify that this Corner Record correctly represents work performed by me or under my direction in compliance with the "Corner Recordation Act" (70-22-101, et seq., M.D.A.)

H. Gene Warren  
Signature of Surveyor & Seal

Date: 11-85 Reg. No. 2734S

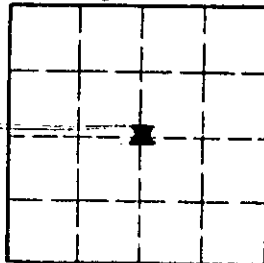
Employer: ROCKY MOUNTAIN SURVEYORS

Office of Clerk and Recorder, County of Lincoln. This "corner record" was filed for record on the Dec 27 day of 1985 was noted on the cross-index plat and is assigned page No. 3206, in book No. \_\_\_\_\_

Janet E. Siegel by Bill Buckhoff  
County Official

Cross Index No. P19 T. 36N R. 28W P.M.M.

Sec. 23



• - corner this sheet