

INSTRUCTIONS

1. Original and/or subsequent record used to evaluate the corner position.
2. Description of evidence found, note discrepancies in the record, state method of establishing lost or obliterated corners.
3. Description of monument and accessories set to perpetuate the corner position.
4. Sketch or corner, show all pertinent data which can best be shown in a sketch example, corner marking, topography ties, position of accessories, etc.
5. Certification must be signed and sealed by Registered Land Surveyor in State of Montana.
6. Fill in Cross Index & Section Diagram at bottom of sheet.

CERTIFIED CORNER RECORDATION

Corner S.E. Cor. Sec. 4 T. 36N. R. 28W. P.M.M. Lincoln County

I. From original 1894 G.L.O. notes: Set Slate Stone 16"x9"x6", 11" in the ground, mkd. with 5 notches on S. and 3 notches on E. from which:

- A 48" Pine bears N.33°E., 15 lks.
- A 8" Pine bears S.22 1/4°E., 58 lks.
- A 30" Pine bears S.62 1/4°W., 75 lks.
- A 30" Pine bears N.75°45'W., 150 lks.

(SEE NOTE I-A)

II. Found Orig. Stone with C.O.E. 68 Brass Cap Mon. along side.

Found 22" Pine Stump bears N.33°E., 9.9 ft. (not 48" Pine).

Found 12" Pine Stump bears S.22 1/4°E., 38.3 ft.

Found 30" Pine Stump bears S.62 1/4°W., 49.5 ft.

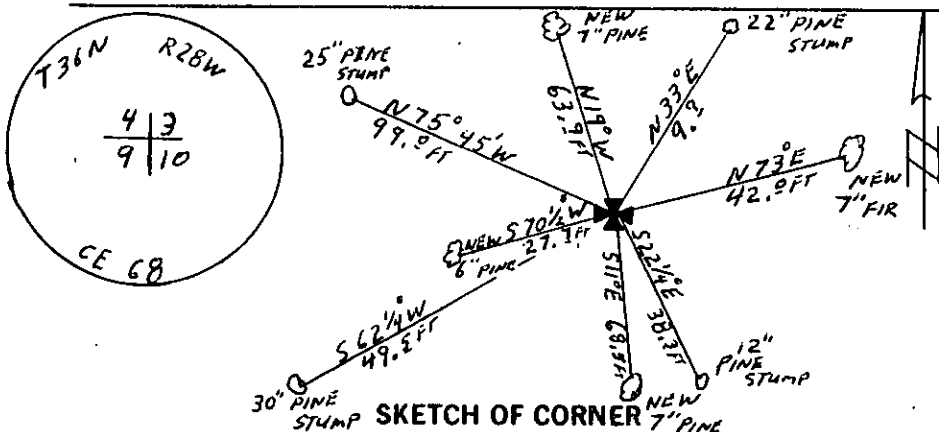
Found 25" Pine Stump bears N.75°45'W., 99.0 ft.

III. Set Rock Cairn around Mon.

Set 4 new B.T.s:

- A 7" Fir bears N.73°E., 42.0 ft., scribed T36N R28W S3 B.T.
- A 7" Pine bears S.11°E., 68.5 ft., scribed T36N R28W S10 B.T.
- A 6" Pine bears S.70 1/2°W., 27.7 ft., scribed T36N R28W S9 B.T.
- A 7" Pine bears N.19°W., 63.9 ft., scribed T36N R28W S4 B.T.

I-A. C.O.E. re-mon., July, 1969: Set 2 1/2" I.P. w/Brass cap, 8" in ground.



CERTIFICATION

1. F. D. Higgins

certify the information shown herein is true and correct.

F. D. Higgins
Signature Ground Party Chief

1. Carl R. McMillen, L.S.

certify that this Corner Record correctly represents work performed by me or under my direction in compliance with the "Corner Recordation Act" (70-22-101, M.D.A.)

Carl R. McMillen
Signature of Surveyor & Seal

Date: 12/12/83 Reg. No. 4659-S

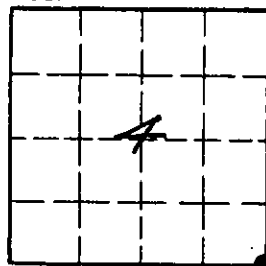
Employer: Carl R. McMillen & Assoc.

Office of Clerk and Recorder, County of Lincoln. This "corner record" was filed for record on the March 21 day of 1984 was noted on the cross-index plat and is assigned page No. 2551, in book No. _____

Janet BF Siegel by Betty L. Conces
County Official deputy

Cross Index No. E-13 T. 36N R. 28W P.M.M.

Sec. 4



• - corner this sheet