

# CERTIFIED CORNER RECORDATION

Corner 3610-3 Sec. 12 T. 36 N. R. 28 W. P.M.M. LINCOLN County

- I. Record: 1969 Plat No. 1616 by J. T. Shaw, Reg. No. 2343S: Subdivides the NW 1/4 of section 11 and the NE 1/4 of section 12, T36N, R28W, P. M., MT. and references the Future Townsite of Rexford.

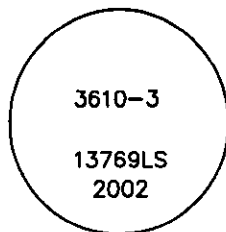
1970 Warranty Deed on file at the Lincoln County Courthouse in Book 12, Page 1

1970 Plat No. 2526 of New Rexford by J. T. Shaw, Reg. No. 2343S: Plats the townsite of New Rexford.

1972 Corp of Engineers survey for the Libby Dam-Lake Koocanusa Cadastral Project: Relocates the existing Rexford Townsite and establishes the administrative boundary for the new Rexford Townsite as shown on Libby Dam- Lake Koocanusa Cadastral map, sheet 32 of 37.

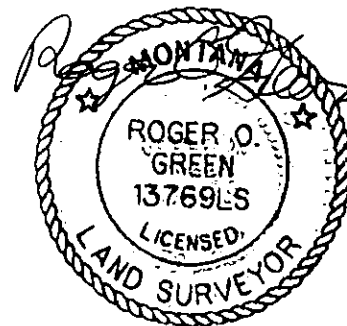
II. No evidence found.

- III. At the position determined by survey, based on sheet 32 of 37 of the C.O.E. Plat and Plat No. 2526, set a 5/8 in. diam. x 24 ins. long rebar, 4 ins. below grade, with a 3 1/4 in. diam. aluminum cap marked as shown. C.O.E. corner 3610-3 was determined to be on line between C.O.E. corners 3610-2 and 3610-4. Due to an error in the coordinates shown on the C.O.E. plat for corner 3610-2, corner 3610-3 could not be set by single proportionate measurement so a bearing-bearing intersection method was used to set corner 3610-3 on line with 3610-2 and 3610-4 at the intersection of the southern right of way for Gateway road as shown on Plat 2526 by J.T. Shaw, Reg. No. 2343S.



No bearing trees available within in a reasonable distance.

SEE C.O.S. FILED THIS SURVEY,



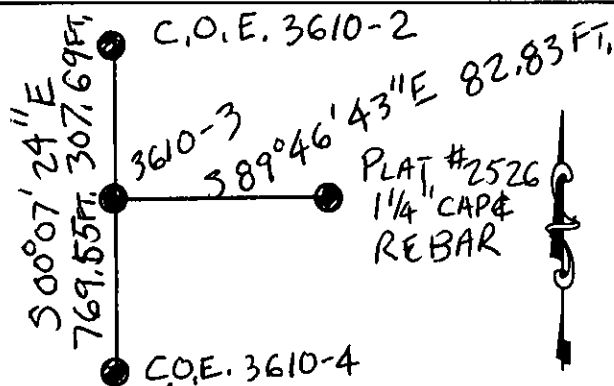
Date of Fieldwork: 9/10/2002

Survey crew: Steve Boyer, Tom Hommel

Magnetic declination: 20° East assumed

Equipment used: Hand compass and loggers tape

U.S. Forest Service, Supervisors Office, 1101 Hwy. 2 West, Libby, MT 59923 (406) 293-6211



SKETCH OF CORNER

NOT TO SCALE

## CERTIFICATION

I, Steven A. Boyer 9750LS  
certify the information shown herein is true and correct.

Steven A. Boyer  
Signature Ground Party Chief

I, Roger O. Green  
certify that this Corner Record correctly represents work performed by me or under my direction in compliance with the "Corner Recordation Act" (70-22-101, et seq., M.C.A.)

Roger O. Green  
Signature of Surveyor & Seal

Date: 09/10/2002 Reg. No. 13769LS

Employer: U. S. Forest Service

Office of Clerk and Recorder, County of Lincoln This "corner

record" was filed for record on 7-10-03

was noted on the cross-index plot and is assigned page No. \_\_\_\_\_, in

book No. 168790

J. Danner

County Official

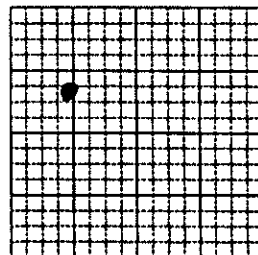
SHT 2 OF 2

F-22

Cross Index No. C.O.E. 3610-3 T. 36N. R. 28W. P.M., MT

Adopted July 1, 1981, Montana Board of Professional Engineers & Land Surveyors

Sec. 12



• corner this sheet