

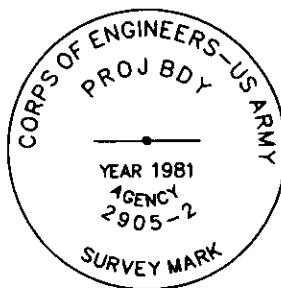
CERTIFIED CORNER RECORDATION

Corner COE 2905-2 Sec 22 T. 36N R. 28W P.M.M. Lincoln County

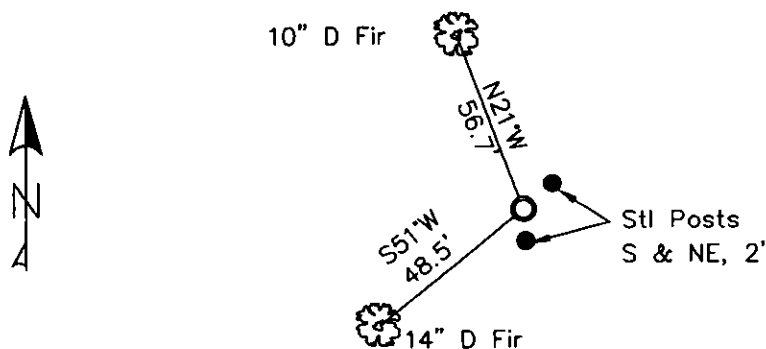
1. Libby Dam - Lake Kookanusa Cadastral 1972 map
2. Found 3 1/2" Corps of Engineers Brass Cap in 4" concrete stamped as shown.
3. Painted red bands around BTs and attached LSM and BT signs.

Established:

A 14 ins. Douglas Fir bears S51°W, 48.5 ft. distant, scribed "2905-2 BT"
 A 10 ins. Douglas Fir bears N21°W, 56.7 ft. distant, scribed "2905-2 BT"
 Steel posts with PB & LSM sign bear South and Northeast, 2.0 ft. distant.



MAGNETIC DECLINATION - 16° EAST



SKETCH OF CORNER

CERTIFICATION

I, ERICH SCHRACK
 certify the information shown herein is true and correct.

I, LAWRENCE A. GLAHE
 certify that this Corner Recordation represents work performed by me or under my direction in compliance with the "Corner Recordation Act" (MCA 92-22-101, et seq.)

Date: 1-25-10 9748 LS
 Employer: GLAHE & ASSOCIATES, INC.

Office of Clerk and Recorder, County of Lincoln. This "corner record" was filed for record: 224189 BOOK: CCR CC&R'S PAGE: 11423 Pages: 1
 was noted on the cross-index: STATE OF MONTANA LINCOLN COUNTY
RECORDED: 01/27/2010 4:05 KOI: CC&R'S
TAMMY D. LAUER CLERK AND RECORDER
 book No. FEE: \$0.00 BY:
 TO: FILED

Cross Index No. 0-P/14 T. 36N R. 28W PMM

Adopted July 1, 1981, Montana Board of Professional Engineers & Land Surveyors

Sec. 22

● corner this sheet