

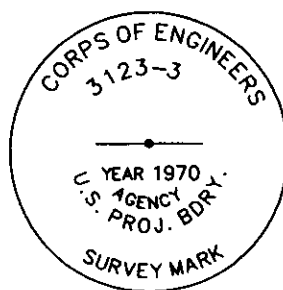
CERTIFIED CORNER RECORDATION

Corner COE 3123-3 Sec 15 T. 36N R. 28W P.M.M. Lincoln County

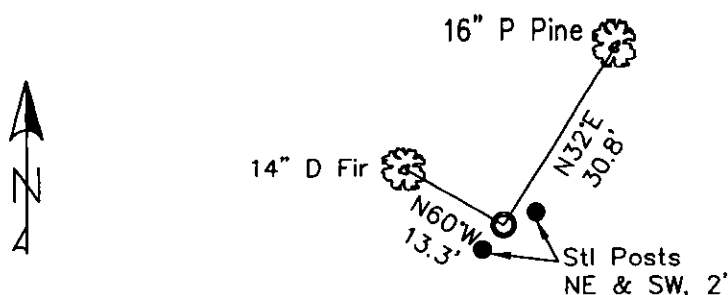
1. Libby Dam - Lake Kookanusa Cadastral 1972 map
2. Found 3 1/2" Corps of Engineers Brass Cap in 4" concrete stamped as shown.
3. Painted red bands around BTs and attached LSM and BT signs.

Established:

A 16 ins. Ponderosa Pine bears N32°E, 30.8 ft. distant, scribed "3123-3 BT"
 A 14 ins. Ponderosa Pine bears N60°W, 13.3 ft. distant, scribed "3123-3 BT"
 Steel posts with PB & LSM signs bear Northeast & Southwest, 2.0 ft distant.



MAGNETIC DECLINATION - 16° EAST



SKETCH OF CORNER

CERTIFICATION

I, ERICH SCHRACK
 certify the information shown herein is true and correct.
 I, LAWRENCE A. GLAHE
 certify that this Corner Record accurately represents work performed by me or under my direction in compliance with the "Corner Recordation Act" (No. 22-401, et seq. M.S.A.)
 Date: 1-25-10 9748 LS
 Employer: GLAHE & ASSOCIATES, INC.

Office of Clerk and Recorder, County of Lincoln. This "corner

record" was filed for record on - 224186 BOOK: CCR CC&R'S PAGE: 11420 Pages: 1

was noted on the cross-index pl STATE OF MONTANA LINCOLN COUNTY

book No. TAMMY D. LAUER CLERK AND RECORDER

FEE: \$0.00
 TO: FILED

BY: Deanne Davis

M-M-N/15-16
 Cross Index No. 36N R. 28W PMM

Adopted July 1, 1981, Montana Board of Professional Engineers & Land Surveyors

Sec. 15

● corner this sheet