

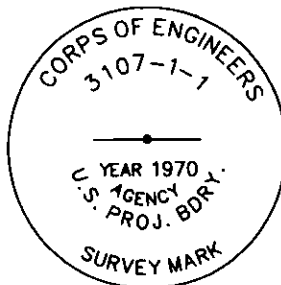
CERTIFIED CORNER RECORDATION

Corner COE 3107-1-1 Sec15 T. 36N R. 28W P.M.M. Lincoln County

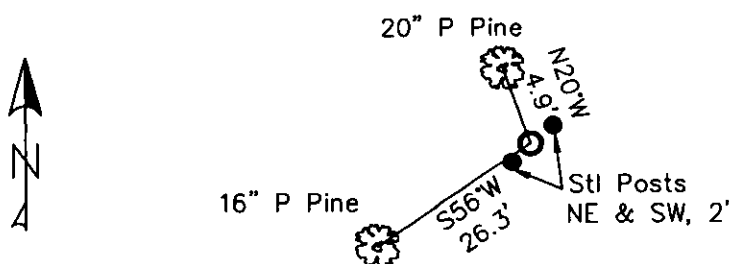
1. Libby Dam - Lake Kookanusa Cadastral 1972 map
2. Found 3 1/2" Corps of Engineers Brass Cap in 4" concrete stamped as shown.
3. Painted red bands around BTs and attached LSM and BT signs.

Established:

A 16 ins. Ponderosa Pine bears S56°W, 26.3 ft. distant, scribed "3107-1-1 BT"
A 20 ins. Ponderosa Pine bears N20°W, 4.9 ft. distant, scribed "3107-1-1 BT"
Steel posts bear NE and SW, 2.0' dist. with PB & LSM decals.



MAGNETIC DECLINATION - 16° EAST



SKETCH OF CORNER

CERTIFICATION

I, ERICH SCHRACK
certify the information shown herein is true and correct.

I, LAWRENCE A. GLAHE
certify that this Corner Recordation was performed by me or under my direction in compliance with the "Corner Recordation Act" (Mont. Code Annotated, 82-1-101, et seq.)

Date: 1-25-10 9748 LS
Employer: GLAHE & ASSOCIATES, INC.

Office of Clerk and Recorder, County of Lincoln. This "corner record" was filed for record or was noted on the cross-index book No. _____

224185 BOOK: CCR CC&R'S PAGE: 11419 Pages: 1
STATE OF MONTANA LINCOLN COUNTY
RECORDED: 01/27/2010 4:01 KOI: CC&R'S
TAMMY D. LAUER CLERK AND RECORDER
FEE: \$0.00 BY: Glennie R. Lauer
TO: FILED

Cross Index No. L-M/16 T. 36N R. 28W PMM

Adopted July 1, 1981, Montana Board of Professional Engineers & Land Surveyors

Sec. 15

● corner this sheet