

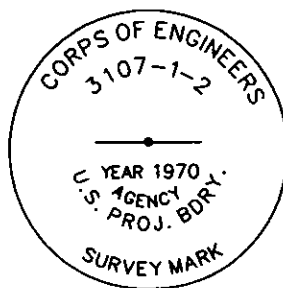
CERTIFIED CORNER RECORDATION

Corner COE 3107-1-2 Sec 15 T. 36N R. 28W P.M.M. Lincoln County

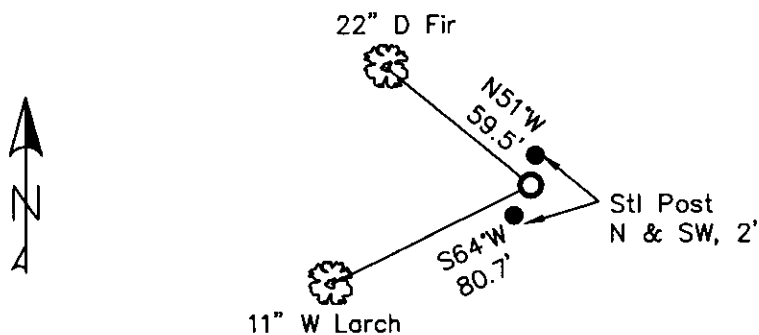
1. Libby Dam - Lake Kookanusa Cadastral 1972 map
2. Found 3½" Corps of Engineers Brass Cap in 4" concrete stamped as shown.
3. Painted red bands around BTs and attached LSM and BT signs.

Established:

A 11 ins. Western Larch bears S64°W, 80.7 ft. distant, scribed "3107-1-2 BT"
A 22 ins. Douglas Fir bears N51°W, 59.5 ft. distant, scribed "3107-1-2 BT"
Steel posts with PB & LSM decals, bear North & Southwest, 2.0 ft. distant.



MAGNETIC DECLINATION - 16° EAST



SKETCH OF CORNER

CERTIFICATION

I, ERICH SCHRACK
certify the information shown herein is true and correct.

I, LAWRENCE A. GLAHE
certify that the Corner Recordation was performed by me or under my direction in compliance with the "Corner Recordation Act" (No. 22-101, et seq. M.C.A.)

Date: 1-25-10 9748 LS
Employer: GLAHE & ASSOCIATES

Office of Clerk and Recorder, County of Lincoln. This "corner record" was filed for record 224184 BOOK: CCR CC&R'S PAGE: 11418 Pages: 1
was noted on the cross-index STATE OF MONTANA LINCOLN COUNTY
book No. RECORDED: 01/27/2010 4:00 KOI: CC&R'S
TAMMY D. LAUER CLERK AND RECORDER
FEE: \$0.00 BY:
TO: FILED

Cross Index No. L-M/16-17 T. 36N R. 28W PMM

Adopted July 1, 1981, Montana Board of Professional Engineers & Land Surveyors

Sec. 15

● corner this sheet