

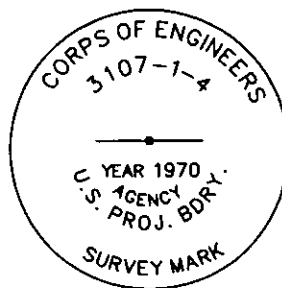
CERTIFIED CORNER RECORDATION

Corner COE 3107-1-4 Sec 15 T. 36N R. 28W P.M.M. Lincoln County

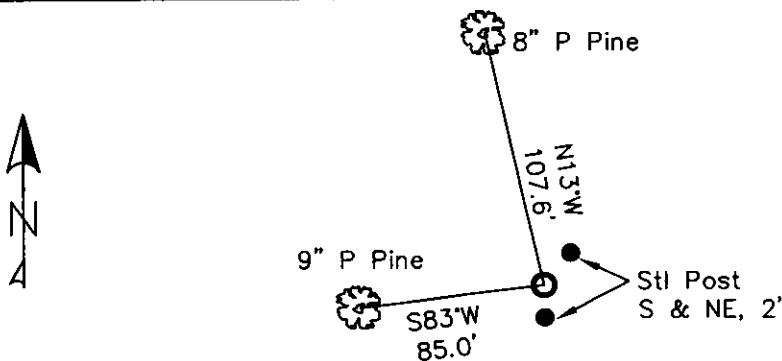
1. Libby Dam - Lake Kookanusa Cadastral 1972 map
2. Found 3 1/2" Corps of Engineers Brass Cap in 4" concrete stamped as shown.
3. Painted red bands around BTs and attached LSM and BT signs.

Established:

A 9 ins. Ponderosa Pine bears S83°W, 85.0 ft. distant, scribed "3107-1-4 BT"
 A 8 ins. Ponderosa Pine bears N13°W, 107.6 ft. distant, scribed "3107-1-4 BT"
 Steel posts with PB & LSM decals, bear South & Northeast, 2.0 ft. distant.



MAGNETIC DECLINATION - 16° EAST



SKETCH OF CORNER

CERTIFICATION

I, ERICH SCHRACK
 certify the information shown herein is true and correct.

I, LAWRENCE A. GLAHE
 certify that this Corner Record represents work performed by me or under my direction in compliance with the "Corner Recordation Act" (No. 22-101, et seq. M.C.A.)

Date: 1-25-10 9748 LS
 Employer: GLAHE & ASSOCIATES

Office of Clerk and Recorder, County of Lincoln. This "corner record" was filed for record or was noted on the cross-index book No. _____

224183 BOOK: CCR CC&R'S PAGE: 11417 Pages: 1
 STATE OF MONTANA LINCOLN COUNTY
 RECORDED: 01/27/2010 3:59 KOI: CC&R'S
 TAMMY D. LAUER CLERK AND RECORDER
 FEE: \$0.00 BY: Heaven DeLeon
 TO: FILED

K-L/16-17
 Cross Index No. T. 36N R. 28W PMM

Adopted July 1, 1981, Montana Board of Professional Engineers & Land Surveyors

Sec. 15

● corner this sheet