

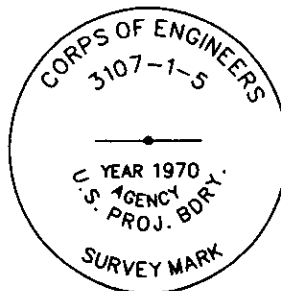
CERTIFIED CORNER RECORDATION

Corner COE 3107 1-5 Sec 15 T. 36N R. 28W P.M.M. Lincoln County

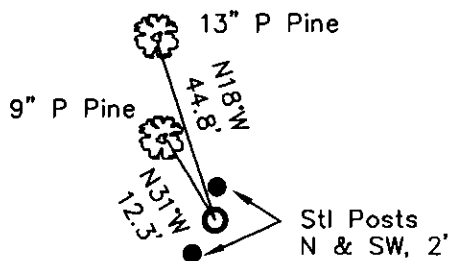
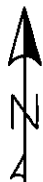
1. Libby Dam - Lake Kookanusa Cadastral 1972 map
2. Found 3 1/2" Corps of Engineers Brass Cap in 4" concrete stamped as shown.
3. Painted red bands around BTs and attached LSM and BT signs.

Established:

A 9 ins. Ponderosa Pine bears N31°W, 12.3 ft. distant, scribed "3107-1-5 BT"
 A 13 ins. Ponderosa Pine bears N18°W, 44.8 ft. distant, scribed "3107-1-5 BT"
 Steel posts with PB & LSM decals, bears North and Southwest, 2.0 ft. distant.



MAGNETIC DECLINATION - 16° EAST



SKETCH OF CORNER

CERTIFICATION

I, ERICH SCHRACK
 certify the information shown herein is true and correct.
 I, LAWRENCE A. GLAHE
 certify that the Corner shown herein represents work performed by me or under my direction in compliance with the "Corner Recordation Act" (Pub. Law 92-101, et seq. U.S.A.)
 Date: 1-25-10 9748 LS
 Employer: GLAHE & ASSOCIATES, INC.

Office of Clerk and Recorder, County of Lincoln. This "corner record" was filed for record on 224182 BOOK: CCR CC&R'S PAGE: 11416 Pages: 1
 was noted on the cross-index pla STATE OF MONTANA LINCOLN COUNTY
 book No. TAMMY D. LAUER CLERK AND RECORDER
 FEE: \$0.00 BY: [Signature]
 TO: FILED

Cross Index No. J-K/17 T. 36N R. 28W PMM

Adopted July 1, 1981, Montana Board of Professional Engineers & Land Surveyors

Sec. 15			

● corner this sheet