

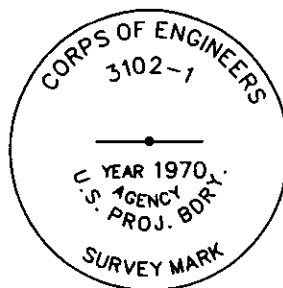
CERTIFIED CORNER RECORDATION

Corner COE 3102-1 Sec 14 T. 36N R. 28W P.M.M. Lincoln County

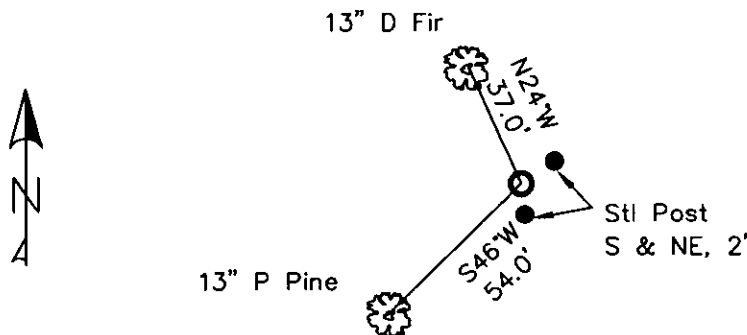
- 1. Libby Dam - Lake Kookanusa Cadastral 1972 map
- 2. Found 3" Corps of Engineers Brass Cap in 4" concrete stamped as shown.
- 3. Painted red bands around BTs and attached LSM and BT signs.

Established:

A 13 ins. Ponderosa Pine bears S46°W, 54.0 ft. distant, scribed "3102-1 BT"
A 13 ins. Douglas Fir bears N24°W, 37.0 ft. distant, scribed "3102-1 BT"
Steel posts with PB & LSM decals, bear South and Northeast, 2.0 ft. distant.



MAGNETIC DECLINATION - 16° EAST



SKETCH OF CORNER

CERTIFICATION

I, ERICH SCHRACK
certify the information shown herein is true and correct.

I, LAWRENCE A. GLAHE
certify that this Corner Record correctly represents work performed by me or under my direction in compliance with the "Corner Recordation Act" (MCA 96-22-401, et seq. M.C.A.)

9748 LS

Date: 1-25-10

Employer: GLAHE & ASSOCIATES, INC.

Office of Clerk and Recorder, County of Lincoln. This "corner record" was filed for record on 224181 BOOK: CCR CC&R'S PAGE: 11415 Pages: 1
was noted on the cross-index p STATE OF MONTANA LINCOLN COUNTY
book No. RECORDED: 01/27/2010 3:57 KOI: CC&R'S
TAMMY D. LAUER CLERK AND RECORDER
FEE: \$0.00 BY: *Leanne Davis*
TO: FILED

Cross Index No. J-K/17 T. 36N R. 28W PMM

Adopted July 1, 1981, Montana Board of Professional Engineers & Land Surveyors

Sec. 14			

● corner this sheet