

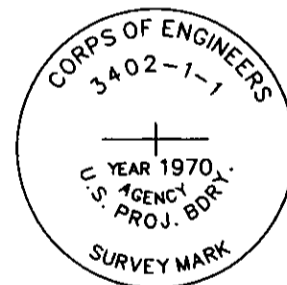
CERTIFIED CORNER RECORDATION

Corner COE 3402-1-1 Sec 11 T. 36N R. 28W P.M.M. Lincoln County

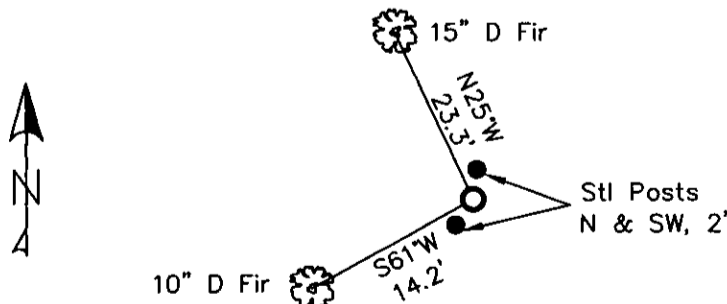
1. Libby Dam - Lake Kookanusa Cadastral 1972 map
2. Found 3" Corps of Engineers Brass Cap in 4" concrete stamped as shown.
3. Painted red bands around BTs and attached LSM and BT signs.

Established:

A 10 ins. Douglas Fir bears S61°W, 14.2 ft. distant, scribed "3402-1-1 BT"
 A 15 ins. Douglas Fir bears N25°W, 23.3 ft. distant, scribed "3402-1-1 BT"
 Steel posts with PB & LSM decals, bear North & Southwest, 2.0 ft. distant.



MAGNETIC DECLINATION - 16° EAST



SKETCH OF CORNER

CERTIFICATION

I, ERICH SCHRACK
 certify the information shown above to be true and correct.

I, LAWRENCE A. GLAHE
 certify that this Corner Recordation represents work performed by me or under my supervision in compliance with the "Corner Recordation Act" (Mont. Code Annotated, § 2-21-101, et seq. M.C.A.)

Date: 1-25-10 9748 LS
 Employer: GLAHE & ASSOCIATES, INC.

Office of Clerk and Recorder, County of Lincoln. This "corner

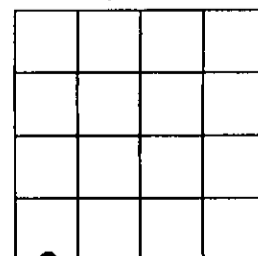
record" was filed for record 224180 BOOK: CCR CC&R'S PAGE: 11414 Pages: 1
 was noted on the cross-index STATE OF MONTANA LINCOLN COUNTY
 book No. RECORDED: 01/27/2010 3:56 KOI: CC&R'S
 TAMMY D. LAUER CLERK AND RECORDER

FEE: \$0.00
 TO: FILED

Cross Index No. J-17-18 T. 36N R. 28W PMM

Adopted July 1, 1981, Montana Board of Professional Engineers & Land Surveyors

Sec. 11



● corner this sheet