

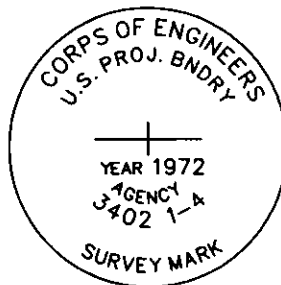
CERTIFIED CORNER RECORDATION

Corner COE 3402 1-4 Sec 11 T. 36N R. 28W P.M.M. Lincoln County

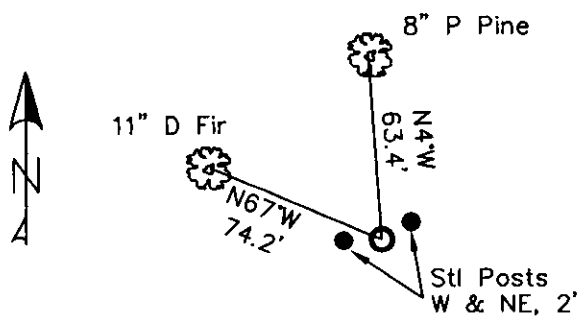
1. Libby Dam - Lake Kookanusa Cadastral 1972 map
2. Found, 3" Corps of Engineers Brass Cap in 4" concrete, stamped as shown.
3. Painted red bands around BTs and attached LSM and BT signs.

Established:

An 11 ins. Douglas Fir bears N67°W, 74.2 ft. distant, scribed "3402-1-4 BT"
 A 8 ins. Ponderosa Pine bears N4°W, 63.4 ft. distant, scribed "3402-1-4 BT"
 Steel posts with PB & LSM decals, bear West & Northeast, 2.0 ft. distant.



MAGNETIC DECLINATION - 16° EAST



SKETCH OF CORNER

CERTIFICATION

I, ERICH SCHRACK
 certify the information shown herein is true and correct.

I, LAWRENCE A. GLAHE
 certify that this Corner Recordation represents work performed by me or under my direction in compliance with the "Corner Recordation Act" (76-22-401, et seq. M.C.A.)

Date: 1-25-10 9748 LS
 Employer: GLAHE & ASSOCIATES, INC.

Office of Clerk and Recorder, County of Lincoln. This "corner record" was filed for record 224177 BOOK: CCR CC&R'S PAGE: 11411 Pages: 1
 was noted on the cross-in STATE OF MONTANA LINCOLN COUNTY
 book No. FEE: \$0.00 BY: TAMMY D. LAUER CLERK AND RECORDER
 TO: FILED, H-J/18-19

Cross Index No. T. 36N R. 28W PMM

Adopted July 1, 1981, Montana Board of Professional Engineers & Land Surveyors

Sec. 11

● corner this sheet