

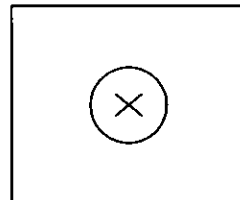
# CERTIFIED CORNER RECORDATION

Corner COE 3403-3 Sec 11 T. 36N R. 28W P.M.M. Lincoln County

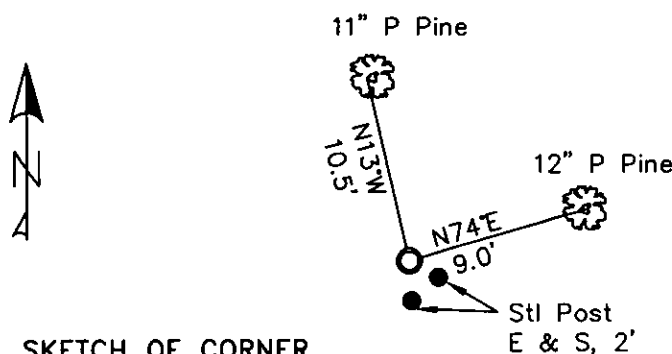
1. Libby Dam - Lake Kookanusa Cadastral 1972 map
2. Found, 1 3/8" Copper Disk with "X" stamp in 6" concrete.
3. Painted red bands around BTs and attached LSM and BT signs.

## Established:

A 12 ins. Ponderosa Pine bears N74°E, 9.0 ft. distant, scribed "3403-3 BT"  
An 11 ins. Ponderosa Pine bears N13°W, 10.5 ft. distant, scribed "3403-3 BT"  
Steel posts with PB & LSM sign, bear East and South, 2.0 ft. distant.



MAGNETIC DECLINATION - 16° EAST



SKETCH OF CORNER

CERTIFICATION

I, ERICH SCHRACK  
certify the information shown herein is true and correct.

LAWRENCE A. GLAHE  
certify that this Corner Recordation was performed by me or under my direct supervision in compliance with the "Corner Recordation Act" (Mont. Code Annotated, § 82-2-101, et seq. M.C.A.)

Date: 1-25-10 No. 9748 LS  
Employer: GLAHE & ASSOCIATES, INC.

Office of Clerk and Recorder, County of Lincoln. This "corner record" was filed for record or 224171 BOOK: CCR CC&R'S PAGE: 11405 Pages: 1 was noted on the cross-index STATE OF MONTANA LINCOLN COUNTY book No. RECORDED: 01/27/2010 3:47 KOI: CC&R'S TAMMY D. LAUER CLERK AND RECORDER FEE: \$0.00 BY: [Signature] TO: FILED ,

Cross Index No. F-G-20 T. 36N R. 28W PMM

Adopted July 1, 1981, Montana Board of Professional Engineers & Land Surveyors

Sec. 11


● corner this sheet