

CERTIFIED CORNER RECORDATION

Corner COE 3403-4 Sec 11 T. 36N R. 28W P.M.M. Lincoln County

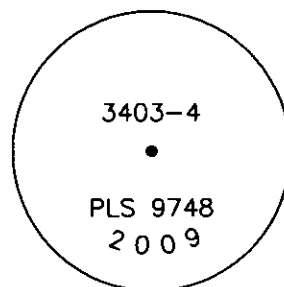
1. Libby Dam - Lake Kookanusa Cadastral 1972 map
2. Original Corner monument had been destroyed from construction work.
3. Painted red bands around BTs and attached LSM and BT signs.

Set:

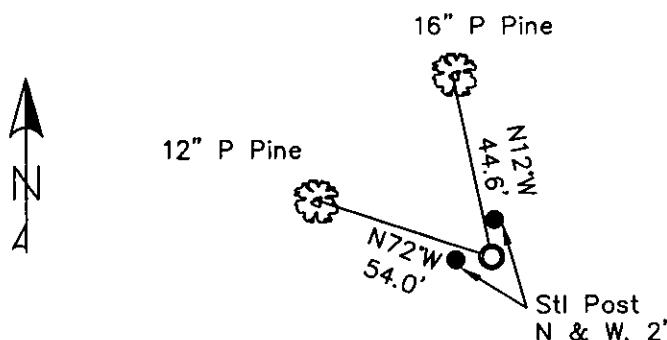
A standard 3 1/4" USFS Aluminum Cap on a 2 1/2" dia. alum. pipe, stamped as shown.
Held the parallel line from 3403-3 to 3403-4 with a line from 3403-6 to 3403-5 east/west and a mean bearing of lines from 3403-7 to 3403-6 and 3403-3 to 3403-2 north/south for the bearing to 3403-5 to 3403-4 to establish new corner position.

Established:

A 12 ins. Ponderosa Pine bears N72°W, 54.0 ft. distant, scribed "3403-4 BT"
A 16 ins. Ponderosa Pine bears N12°W, 44.6 ft. distant, scribed "3403-4 BT"
Steel posts with PB & LSM sign, bear North and West, 2.0 ft. distant.



MAGNETIC DECLINATION - 16° EAST



SKETCH OF CORNER

CERTIFICATION

I, ERICH SCHRACK
certify the information shown is true and correct.

I, LAWRENCE A. GLAHE
certify that this Corner monument represents work performed by me or under my direction in compliance with the "Corner Recordation Act" (MCA 82-1-101, et seq.)

Date: 12/21/10 9748 LS
Employer: GLAHE & ASSOCIATES, INC.

Office of Clerk and Recorder, County of Lincoln. This "corner

record" was filed for record on 224170 BOOK: CCR CC&R'S PAGE: 11404 Pages: 1

was noted on the cross-index STATE OF MONTANA LINCOLN COUNTY

book No. RECORDED: 01/27/2010 3:46 KOI: CC&R'S

TAMMY D. LAUER CLERK AND RECORDER

BY: [Signature]

FEE: \$0.00 TO: FILED

F-G-G-20-21 Cross Index No. T. 36N R. 28W PMM

Adopted July 1, 1981, Montana Board of Professional Engineers & Land Surveyors

Sec. 11			

● corner this sheet