

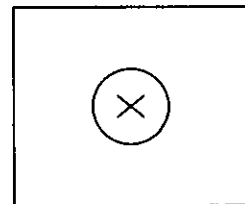
CERTIFIED CORNER RECORDATION

Corner COE 3403-6 Sec 11 T. 36N R. 28W P.M.M. Lincoln County

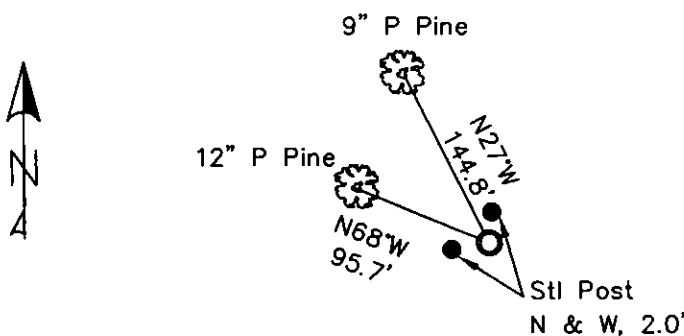
1. Libby Dam - Lake Kookanusa Cadastral 1972 map
2. Found 1 3/8" Copper Disk with "X" in 6" concrete.
3. Painted red bands around BTs and attached LSM and BT signs.

Established:

A 12 ins. Ponderosa Pine bears N68°W, 95.7 ft. distant, scribed "3403-6 BT"
A 9 ins. Ponderosa Pine bears N27°W, 144.8 ft. distant, scribed "3403-6 BT"
Steel posts with PB & LSM sign, bear North and West, 2.0 ft. distant.



MAGNETIC DECLINATION - 16° EAST



SKETCH OF CORNER

CERTIFICATION

I, ERICH SCHRACK
certify the information shown herein to be true and correct.

I, LAWRENCE A. GLAHE
certify that this Corner Recordation represents work performed by me or under my supervision in compliance with the "Corner Recordation Act" (MCA 92-22-401, et seq. M.C.A.)

Date: 1-25-10 9748 LS
Employer: GLAHE & ASSOCIATES, INC.

9748 LS

Office of Clerk and Recorder, County of Lincoln. This "corner

record" was filed for record c 224168 BOOK: CCR CC&R'S PAGE: 11402 Pages: 1

was noted on the cross-index: STATE OF MONTANA LINCOLN COUNTY

book No. TAMMY D. LAUER CLERK AND RECORDER

FEE: \$0.00

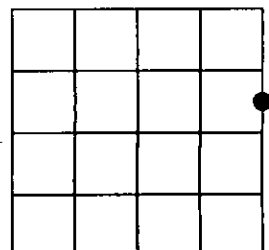
BY: [Signature]

TO: FILED

Cross Index No. F-G 21 T. 36N R. 28W PMM

Adopted July 1, 1981, Montana Board of Professional Engineers & Land Surveyors

Sec. 11



● corner this sheet