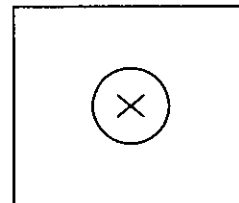


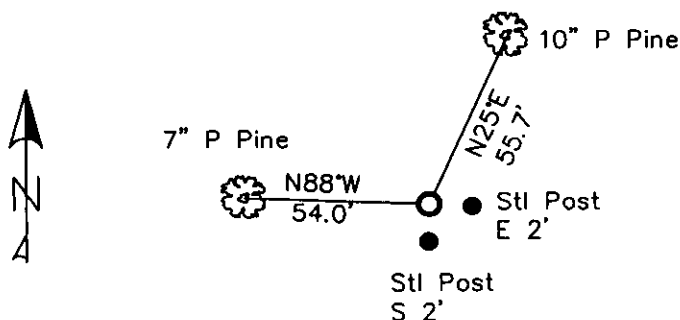
CERTIFIED CORNER RECORDATION

Corner COE 3403-7 Sec 11 T. 36N R. 28W P.M.M. Lincoln County

- 1. Libby Dam - Lake Kookanusa Cadastral 1972 map
- 2. Found 1 3/8" Copper Disk with "X" in 6" concrete.
- 3. Established:
 - A 10 ins. Ponderosa Pine bears N25°E, 55.7 ft. distant, scribed "3403-7 BT"
 - A 7 ins. Ponderosa Pine bears N88°W, 54.0 ft. distant, scribed "3403-7 BT"
 - Steel posts with PB sign, bear East and South, 2.0 ft. distant.



MAGNETIC DECLINATION - 16° EAST



SKETCH OF CORNER

CERTIFICATION

I, ERICH SCHRACK
certify the information shown herein is true and correct.

I, LAWRENCE A. GLAHE
certify that this Corner Recordation was performed by me or under my supervision in compliance with the "Corner Recordation Act" (Pro 22-101, et seq M.C.A.)

Date: 1/25/10 9748 LS
Employer: GLAHE & ASSOCIATES, INC.

Office of Clerk and Recorder, County of Lincoln. This "corner

record" was filed for record 224167 BOOK: CCR CC&R'S PAGE: 11401 Pages: 1
was noted on the cross-index STATE OF MONTANA LINCOLN COUNTY
book No. RECORDED: 01/27/2010 3:43 KOI: CC&R'S
TAMMY D. LAUER CLERK AND RECORDER
FEE: \$0.00 BY: *Deanne Davis*
TO: FILED

Cross Index No. F-G 21 T. 36N R. 28W PMM

Adopted July 1, 1981, Montana Board of Professional Engineers & Land Surveyors

Sec. 11

● corner this sheet