

CERTIFIED CORNER RECORDATION

Corner COE 3610-2 Sec 12 T. 36N R. 28W P.M.M. Lincoln County

1. Libby Dam - Lake Kookanusa Cadastral 1972 map

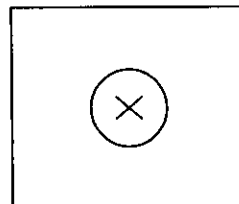
2. Found:

- A 1 3/8" Copper Disk with "X" in 6" concrete.
- A Steel post with PB & LSM decals, bears South, 2.0 ft. dist.

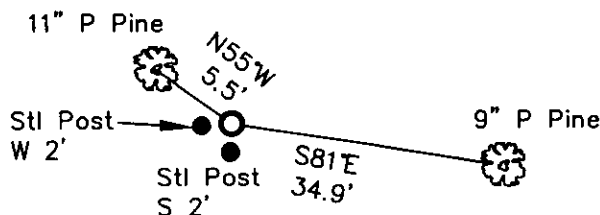
3. Painted red bands around the bearing trees and attached LSM and BT signs.

Established:

- A 9 ins. Ponderosa Pine bears S81°E, 34.9 ft. dist., scribed "3610-2 BT".
- An 11 ins. Ponderosa Pine bears N55°W, 5.5 ft. dist., scribed "3610-2 BT".
- A Steel post with PB sign, bears West, 2.0 ft. distant.



MAGNETIC DECLINATION - 16° EAST



SKETCH OF CORNER

CERTIFICATION

I, ERICH SCHRACK,
certify the information shown here is true and correct.

I, LAWRENCE A. GLAHE,
certify that the Corner shown here represents work performed by me or under my direction in compliance with the "Corner Recordation Act" (Mont. Code Annotated, et seq. M.C.A.)

Date: 1-26-10 No. 9748 LS
Employer: GLAHE & ASSOCIATES, INC.

Office of Clerk and Recorder, County of Lincoln. This "corner

record" was filed for record c 224166 BOOK: CCR CC&R'S PAGE: 11400 Pages: 1

was noted on the cross-index STATE OF MONTANA LINCOLN COUNTY

book No. TAMMY D. LAUER CLERK AND RECORDER

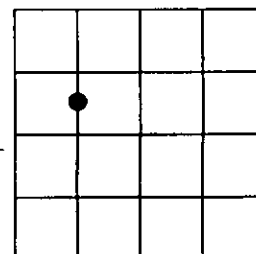
FEE: \$0.00

TO: FILED

Cross Index No. F-G-22-T. 36N R. 28W PMM

Adopted July 1, 1981, Montana Board of Professional Engineers & Land Surveyors

Sec. 12



● corner this sheet