

CERTIFIED CORNER RECORDATION

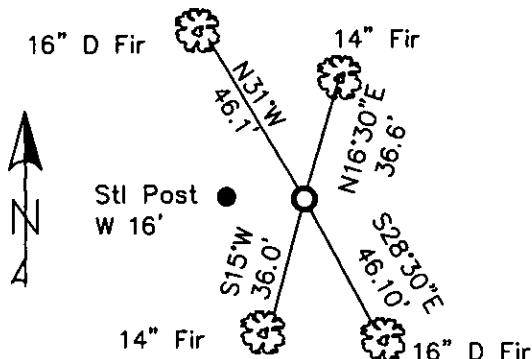
Corner South 1/4 Sec. 15 T. 36N R. 28W P.M.M. Lincoln County

1. Libby Dam - Lake Kookanusa Cadastral 1972 map
from the computed position for the south 1/4 of Sec. 15:
Set a Standard USCE concrete monument for WP.
2. Found WP Mon. Had been destroyed when road was constructed.
A 14 ins. Fir bears N16°30'E, 36.6 ft., with tag reading N16°30"E, 36.6 F.
A 16 ins. Fir (twisted) bears S28°30"E, 46.10 ft. distant, with tag reading S28°30'E, 46.1 F..
3. Set a USFS Alum. Cap on 5/8" Rebar, set 0.3 ft. below road surface, stamped as shown,
at corner position from found BTs. Placed a rock over monument in road.
Painted red bands around the existing BT's and replaced tags with new bearings.

Established:
A 14 ins. Douglas Fir bears S15°W, 36.6 ft. distant,
A 16 ins. Douglas Fir bears N31°W, 46.10 ft. distant,
A Steel Post with LSM sign bears West, 16.0 ft. distant on south side of road.



MAGNETIC DECLINATION - 16° EAST



SKETCH OF CORNER

CERTIFICATION

I, ERICH SCHRACK
certify the information shown above is true and correct.

LAWRENCE A. GLAHE
certify that this Corner Record correctly represents work
performed by me or under my direction in compliance with
the "Corner Recordation Act" (MCA 92-22-101, et seq. M.C.A.)

Date: 1-25-10 9748 LS
Employer: GLAHE & ASSOCIATES, INC.

Office of Clerk and Recorder, County of Lincoln. This "corner

record" was filed for record on

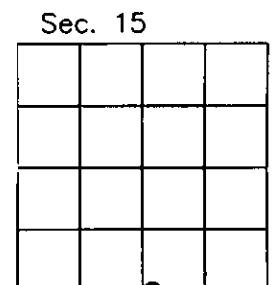
was noted on the cross-index

book No. _____

224165 BOOK: CCR CC&R'S PAGE: 11399 Pages: 1
STATE OF MONTANA LINCOLN COUNTY
RECORDED: 01/27/2010 3:41 KOI: CC&R'S
TAMMY D. LAUER CLERK AND RECORDER
FEE: \$0.00 BY: Glennie Dennis
TO: FILED

Cross Index No. N-15 T. 36N R. 28W PMM

Adopted July 1, 1981, Montana Board of Professional Engineers & Land Surveyors



● corner this sheet