

CERTIFIED CORNER RECORDATION

Corner SW COR SEC 14 T. 36N R. 28W P.M.M. Lincoln County

1. 1903 GLO Record: Set a porphyry stone, 16x9x4 ins., 11 ins. in the ground, for cor. of secs. 14, 15, 22, and 23, and mkd. stone and 4 bearing trees.

1969 Corp. of Engineers Remonumentation Recordation by Lawrence A. Signani, 11422 State of Washington:

Found a stone in place with 3 notches on S. and 2 notches on E. faces,

from which:

BT that bears N29°30'W, 128 lks., stump no marks.
BT that bears N15°30'E, 124 lks., stump with markings.
Set an iron pipe with brass cap marked as shown.

from which the following references:

A pine, 10 ins. diam., bears N40°10'E., 80 lks. dist., mkd. FS/RM BT.
A fir, 8 ins. diam., bears S73°50'W., 24 lks. dist., mkd. FS/RM BT.

1985 Certified Corner Recordation by Thomas C. Hill MT Reg. No. 5612-S: Found a Corp. of Engineers monument, protruding 8 ins. above ground, with a brass cap marked as described on recordation with the original stone reset upright along side post,

from which the following references:

A stump, 24 ins. diam., bears N13°E., 124 lks. dist., scribing visible.
A pine, 16 ins. diam., bears N41°E., 81.9 lks. dist., mkd. FS RM BT.
A stump, 12 ins. diam., bears S73°W., 24 lks. dist., log piece with scribing.
A stump, 24 ins. diam., bears N29°W., 128 lks. dist., scribing obliterated.

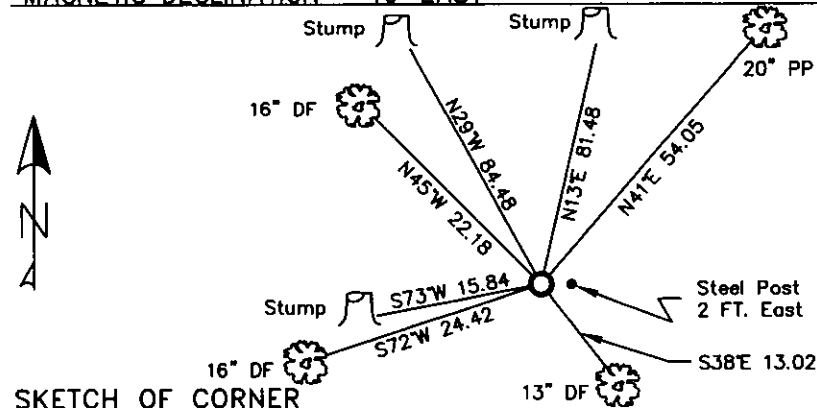
Established the following new references:

A fir, 10 ins. diam., bears S38°E., 19.7 lks. dist., mkd. T36N R28W S23 BT.
A fir, 10 ins. diam., bears S72°W, 37 lks. dist., mkd. T36N R28W S22 BT.
A fir, 10 ins. diam., bears N45°W, 33.6 lks. dist., mkd. T36N R28W S15 BT.
Set a guard post, with a Survey Marker decal attached, near corner.
Painted a red band around each bearing tree and attached Land Survey Monument and Bearing Tree signs.

2. Found a 2 1/2 inch brass monument 8 ins. out of ground with a stone on west side of monument.
A 24 inch rotted stump N13°E., 81.84 ft., no scribing visible.
A 20 inch ponderosa pine N41°E., 54.05 ft., well healed face.
A 12 inch stump S73°W, 15.84 ft., no scribing.
A 24 inch stump N29°W, 84.48 ft., no scribing.
A 13 inch douglas fir S38°E., 13.02 ft., well healed face.
A 16 inch douglas fir S72°W, 24.42 ft., well healed face.
A 16 inch douglas fir N45°W, 22.18 ft., well healed face.
A metal post with LSM decal 2 ft. east of monument.

3. Stacked and painted a small mound of stone around monument.
Repainted rings and blazes and put aluminum nails at record distances in BTs.
Replaced BT tag on section 14 BT.

MAGNETIC DECLINATION - 16° EAST



CERTIFICATION
I, CURT HECKROTH
certify the information shown is true and correct.
Signature Ground Party: *Curt Heckroth*
I, LAWRENCE A. GLAHE
certify that this Corner Record correctly represents work performed by me or under my direct supervision in compliance with the "Corner Recordation Act" (7-11-22-101, et seq., M.C.A.)
Signature: *Lawrence A. Glahé*
Date: 1-25-10
Employer: GLAHE & ASSOCIATES
MONTANA
REGISTERED SURVEYOR
9748 LS

Office of Clerk and Recorder, County of Lincoln. This "corner

record" was filed for record on 224164 BOOK: CCR CC&R'S PAGE: 11398 Pages: 1

was noted on the cross-index; STATE OF MONTANA LINCOLN COUNTY
RECORDED: 01/27/2010 3:40 KOI: CC&R'S

book No. TAMMY D. LAUER CLERK AND RECORDER
FEE: \$0.00 BY: *Tammy D. Lauer*
TO: FILED

Cross Index No. N-17 T. 36N R. 28W PMM

Adopted July 1, 1981, Montana Board of Professional Engineers & Land Surveyors

Sec. 14

● corner this sheet