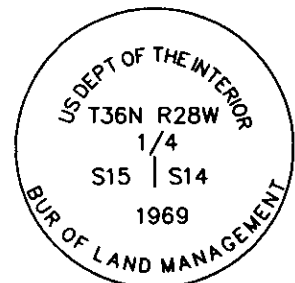


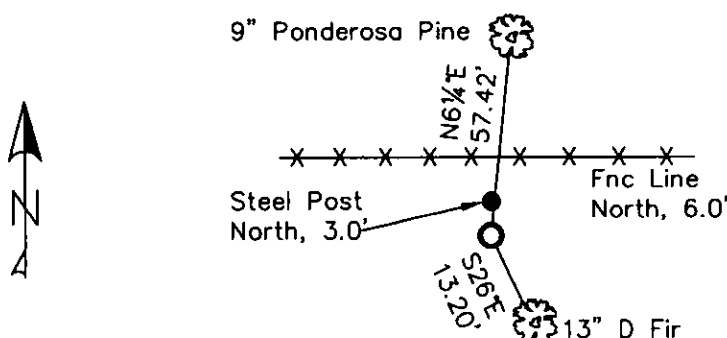
# CERTIFIED CORNER RECORDATION

Corner E 1/4 Sec 15 T. 36N R. 28W P.M.M. Lincoln County

- 1903 Subdivision and Meander Lines of T36N R28N by Abraham L. Rinearson  
Set:  
A quartzite stone, 14x10x6 ins., 9 ins. in the ground, for 1/4 sec. cor., marked 1/4 on W. face from which:  
A Pine, 16 ins. diam., bears N56°E, 70 lks. dist., marked 1/4 S14 BT.  
A Fir, 8 ins. diam., bears S60°W, 64 lks. dist., marked 1/4 S15 BT.
- 1969 Remonumentation of Certain Corners in the Kootenai National Forest by Roy G. Leedy:  
The Quarter Corner of Section 14 and 15 monumented with a quartzite stone 14"x10"x6", firmly set, marked "1/4" on the West face and witnessed by the remains of one of the original bearing trees:  
A stump hole bears N56°E, 70 lks. dist.  
At corner position:  
Set an Iron Post, 30 ins. long, 2 1/2 ins. diam., 24 ins. in the ground, with Brass Cap marked as shown.  
From which:  
A 7 ins. dia. Pine bears N6 1/4°E, 87 lks. dist., marked "X BT".
- Found 3 1/4" BLM brass monument, 6 ins. out of ground, marked as shown.  
A 9" Ponderosa Pine bears N6 1/4°E, 57.42 ft. dist., open face, mkd. "X BT" visible.  
13" Douglas Fir bears S26°E, 13.20 ft. dist., with well healed face and BT tag "JHF 7/10/69".
- Stacked and painted a small mound of stone around monument.  
Repainted rings & blazes on BT's and placed aluminum nails at record distances.  
Placed LSM signs on the back of BT's and new BT tag on Sec. 14 BT.  
Established:  
A Steel Post with LSM decal bears North, 3.0 ft. dist.



MAGNETIC DECLINATION - 16° EAST



SKETCH OF CORNER

CERTIFICATION  
I, CURT HECKROTH *Curt Heckroth*  
certify the information shown herein is true and correct.

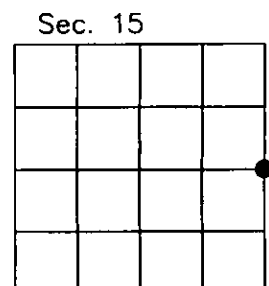
I, LAWRENCE A. GLAHE  
certify that this Corner Record represents work performed by me or under my direction in compliance with the "Corner Recordation Act" (MCA 82-1401, et seq. (M.C.A.))

Date: 1-25-10 *1-25-10* 9748 LS  
Employer: GLAHE & ASSOCIATES, INC.

Office of Clerk and Recorder, County of Lincoln. This "corner record" was filed for record or 224163 BOOK: CCR CC&R'S PAGE: 11397 Pages: 1 was noted on the cross-index STATE OF MONTANA LINCOLN COUNTY RECORDED: 01/27/2010 3:39 KOI: CC&R'S TAMMY D. LAUER CLERK AND RECORDER book No.                      FEE: \$0.00 BY: *Deanna Deun* TO: FILED

Cross Index No. L-17 T. 36N R. 28W PMM

Adopted July 1, 1981, Montana Board of Professional Engineers & Land Surveyors



● corner this sheet