

# CERTIFIED CORNER RECORDATION

Corner S¼ SEC 11 T. 36N R. 28W P.M.M. Lincoln County

## 1. Original 1903 GLO Notes Vol. 4402 Page 49

Corner Desc:

A Granite Stone 16"x10"x8", 11 ins. in ground, marked "1/4 CNN FNS"

Witness Marks:

A 12 ins. dia. Pine bears N7°30'E, 70 lks, marked "1/4 S 11 BT".

A 16 ins. dia. Tamarack bears South, 100 lks, marked "1/4 S 14 BT".

## 1969 Certified Corner Recordation by Lawrence A. Signani, MT Reg. No. 11422

Found:

A Stone in place marked 1/4 on north face.  
Recovered the 2 stumps of the BTs.

Set:

An Iron Pipe with Bronze Cap, alongside stone, stamped as shown.

A 10 ins. diam. Pine bears S52°20'W, 71 lks, marked "FS/RM BT".

## 2. Found:

A 2½" Brass monument 9 ins. out of ground with a stone on east side of monument.  
No evidence of any BT's. Both BTs and remains in S14 land in road. No evidence of BT in S11 either corner, lands under E-W fenceline.

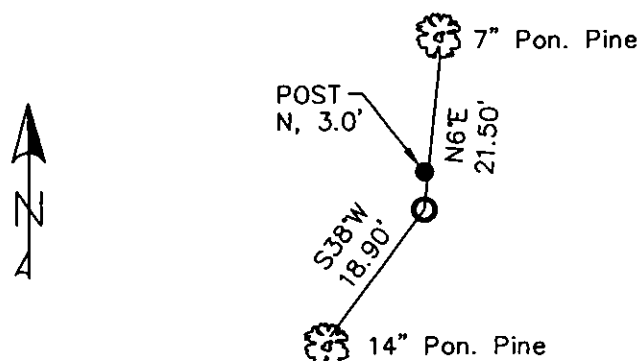
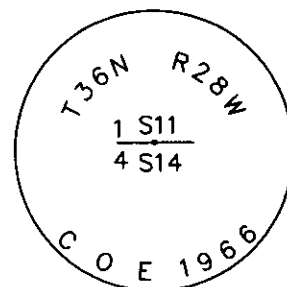
## 3. Stacked and painted a small mound of stone around monument. Painted red bands around the bearing trees and attached Land Survey Monument and Bearing Tree signs.

Established:

A 7 ins. dia. Ponderosa Pine bears N6°E, 21.50 ft. dist. scribed 1/4 S11 BT.

A 14 ins. dia. Ponderosa Pine bears S38°W, 18.90 ft. dist. scribed 1/4 S14 BT.

A Steel Post with LSM decal bears North, 3.0 ft. dist.



SKETCH OF CORNER

CERTIFICATION  
I, CURT HECKROTH *Curt Heckroth*  
certify the information shown herein is true and correct.

I, LAWRENCE A. GLAHE  
certify that this Corner Recordation was performed by me or under my supervision in compliance with the "Corner Recordation Act" (MCA 96-22-401, et seq. M.C.A.)

Date: 1-25-10 *1-25-10* 9748 LS  
Employer: GLAHE & ASSOCIATES, INC.

Office of Clerk and Recorder, County of Lincoln. This "corner

record" was filed for record c

was noted on the cross-index

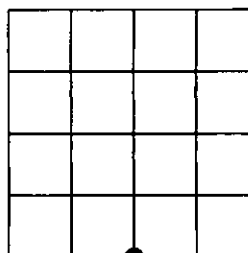
book No. \_\_\_\_\_

224160 BOOK: CCR CC&R'S PAGE: 11394 Pages: 1  
STATE OF MONTANA LINCOLN COUNTY  
RECORDED: 01/27/2010 3:36 KOI: CC&R'S  
TAMMY D. LAUER CLERK AND RECORDER  
FEE: \$0.00 BY: *Glennie Stearns*  
TO: FILED

Cross Index No. J-19 T. 36N R. 28W PMM

Adopted July 1, 1981, Montana Board of Professional Engineers & Land Surveyors

Sec. 11



● corner this sheet