

CERTIFIED CORNER RECORDATION

Corner East 1/4, Sec. 11 T. 36N R. 28W P.M.M. Lincoln County

1. 1905 GLO Notes Vol. 4402 B Page 1

Corner Desc:

A Fir Post, 3 ft. long, 3 ins. square, 24 ins. in ground, marked 1/4 S 11 on West and 12 on East.

Witness Marks:

A 40 ins. Pine bears S64°45' E, 105 lks, marked 1/4 S12 BT,

A 14 ins. Tamarack bears S19°15'W, 42 lks, marked 1/4 S11 BT,

1969 Certified Corner Recordation by Lawrence A. Signani, MT. Reg. No. 11422-LS

Found:

A 40 ins. stump was recovered, no markings,

A 14 ins. Tamarack stump was recovered, no markings,

Original post not recovered.

Set:

An Iron Pipe with Bronze cap at Intersection of old bearing trees. Iron Pipe is in the north track of trail, 0.7 below top of ground

A rock 10 ins. x 12 ins. x 4 ins. placed over top of pipe & covered with dirt.

A squared 2 ins. charred pine post bears N2°30"E, 7 lks. from 1/4 cor., marked "1/4" on south face.

Established:

A 10 ins. Pine bears N37°30'E, 179 lks. dist.;

A Pine bears N66°50'W, 139 lks. dist.

2. Found:

A 3/4" ID Iron Pipe (Bronze cap was gone), flush with ground at corner of cyclone fence.

A double 25 ins. dia. Ponderosa Pine with rusted spike in southern stalk, bears N67°W, 91.74 ft. distant, no blaze

A 24 ins. Pine Stump bears N37°E, 118.14 ft. distant,

A Pine Stump (decayed) bears S65°E, 69.3 ft. distant.

3. Established:

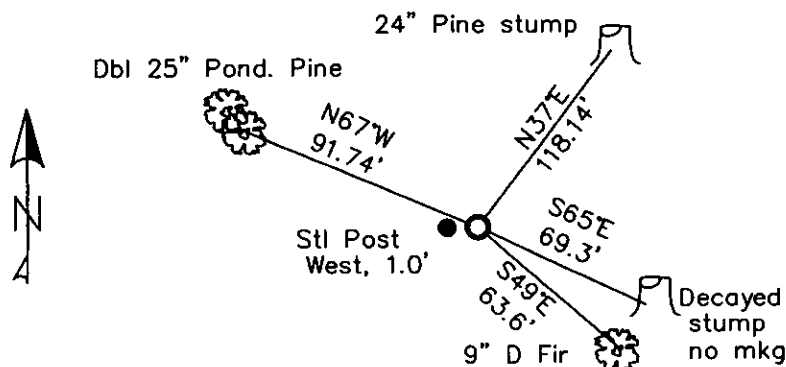
A 9 ins. Douglas Fir bears S49°E, 63.6 ft. distant, scribed "1/4 S12 BT"

A Steel post with LSM sign, bears West, 1.0 ft. dist.

Placed signs and tags on existing BT's, painted live BT;

Painted red bands around the bearing trees and attached Land Survey Monument and Bearing Tree signs.

MAGNETIC DECLINATION - 16° EAST



SKETCH OF CORNER

CERTIFICATION

I, ERICH SCHRACK  
certify the information shown hereon to be true and correct.

I, LAWRENCE A. GLAHE  
certify that this Corner Recordation represents work performed by me or under my direction in compliance with the "Corner Recordation Act" (MCA 92-22-101, et seq. M.C.A.)

Date: 1-25-16  
Employer: GLAHE & ASSOCIATES, INC.

9748 LS  
REGISTERED  
SURVEYOR

Office of Clerk and Recorder, County of Lincoln This "corner

record" was 224141 BOOK: CCR CC&R'S PAGE: 11393 Pages: 1

STATE OF MONTANA LINCOLN COUNTY

was noted or RECORDED: 01/27/2010 1:02 KOI: CC&R'S in

TAMMY D. LAUER CLERK AND RECORDER

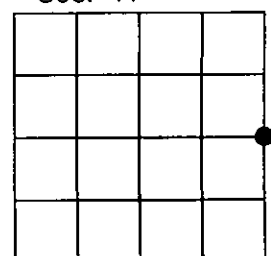
book No. —FEE: \$0.00 BY: *Jeannie Dennis*

TO: FILED

Cross Index No. G-21 T. 36N R. 28W PMM

Adopted July 1, 1981, Montana Board of Professional Engineers & Land Surveyors

Sec. 11



● corner this sheet