

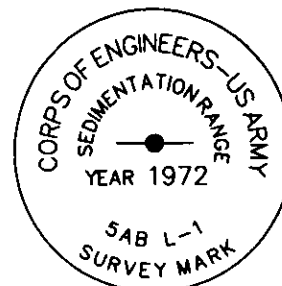
# CERTIFIED CORNER RECORDATION

Corner WC 11 12 T. 36N R. 28W P.M.M. Lincoln County

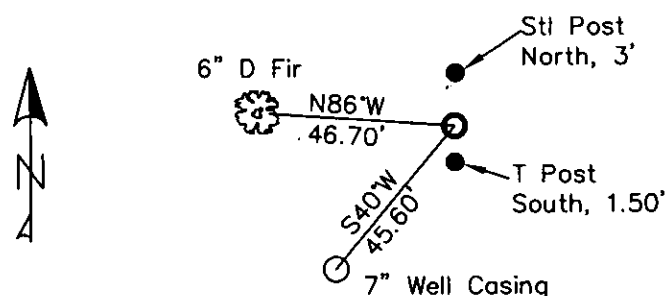
1. At the Section corner from COE Libby Dam - Lake Koocanusa Cadastral 1972 map, they found a private pipe set by St. Regis.
2. Found 4½" x 4½" concrete monument with 3½" Corps of Engineers brass cap marked as shown, flush with ground.  
A Steel T Post bears South, 1 ft. dist.
3. Cleared brush from around corner and exposed the monument. Painted concrete portion of monument. Painted red bands around the bearing trees and attached Land Survey Monument and Bearing Tree signs.

## Established:

- A 7" Steel Well casing bears S40°W, 45.60 ft. dist.
- A 6" Douglas Fir bears N86°W, 46.70 ft. dist., scribed "T36N R28W S11 WC BT".
- A Steel Post with LSM decal bears North, 3.0 ft. dist.



MAGNETIC DECLINATION - 16° EAST



SKETCH OF CORNER

CERTIFICATION  
I, CURT HECKROTH *Curt Heckroth*  
certify the information shown is true and correct.

Signature Ground Party, Clerk

I, LAWRENCE A. GLAHE  
certify that the Corner and Record represents work performed by me or under my direction in compliance with the "Corner Recordation Act" (No. 221-401, et seq. M.C.A.)

9748 LS

Date: 1-25-10 9748 LS

Employer: GLAHE & ASSOCIATES, INC.

Office of Clerk and Recorder, County of Lincoln. This "corner

record" was filed ( 224140 BOOK: CCR CC&R'S PAGE: 11392 Pages: 1

STATE OF MONTANA LINCOLN COUNTY

was noted on the RECORDED: 01/27/2010 1:01 KOI: CC&R'S

TAMMY D. LAUER CLERK AND RECORDER

book No.        FEE: \$0.00

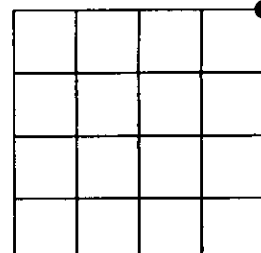
TO: FILED

BY: *Glennie Benson*  
*Deputy*

Cross Index No. E-21 T. 36N R. 28W PMM

Adopted July 1, 1981, Montana Board of Professional Engineers & Land Surveyors

Sec. 11



● corner this sheet