

INSTRUCTIONS

1. Original and/or subsequent record used to evaluate the corner position.
2. Description of evidence found, note discrepancies in the record, state method of establishing lost or obliterated corners.
3. Description of monument and accessories set to perpetuate the corner position.
4. Sketch of corner, show all pertinent data which can best be shown in a sketch example, corner marking, topography ties, position of accessories, etc.
5. Certification must be signed and sealed by Land Surveyor registered in the State of Montana.
6. Fill in Cross Index & Section Diagram at bottom of sheet.

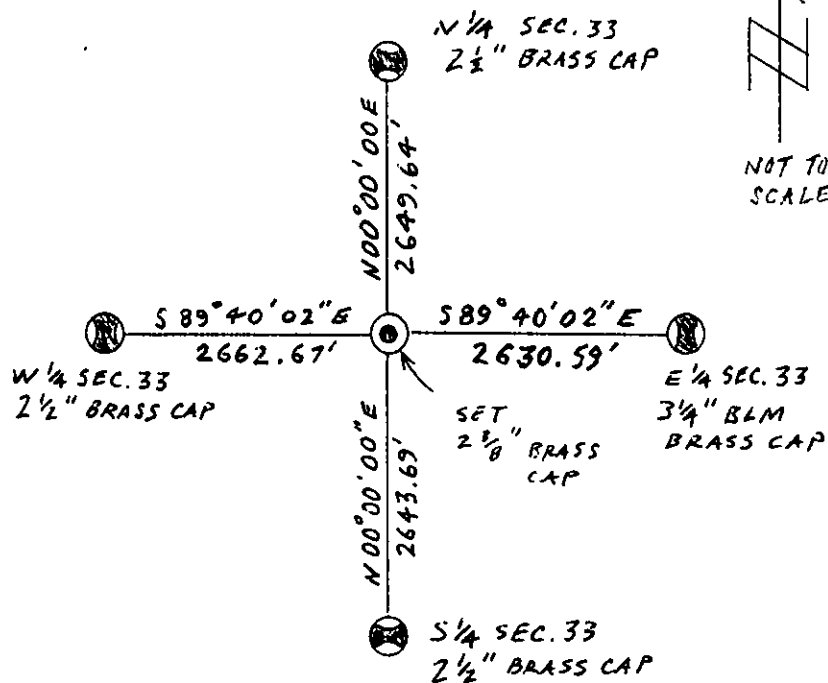
CERTIFIED CORNER RECORDATION

Corner CENTER 1/4 SECTION 33 T. 36N R. 28W P.M.M. LINCOLN County

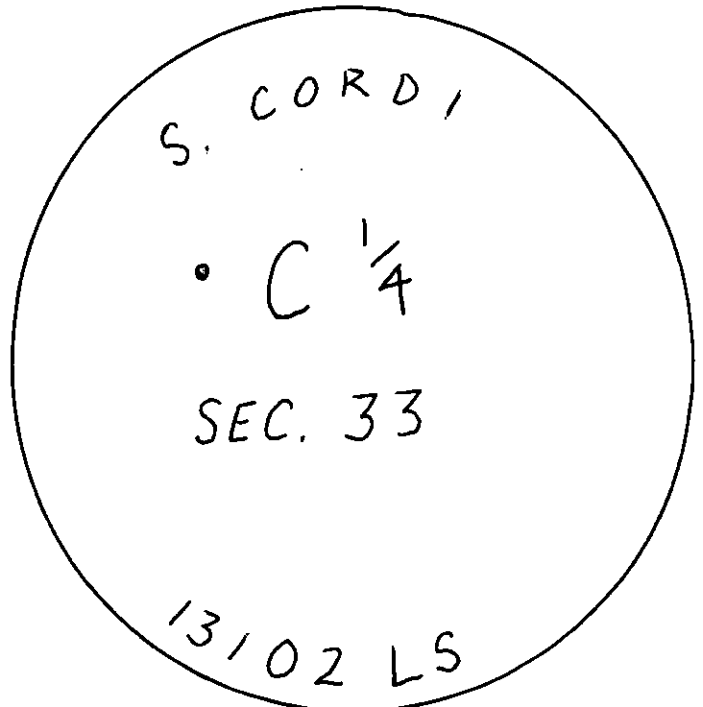
I. To our knowledge, this corner was never monumented.

II. This corner was established as sketched below.

III.

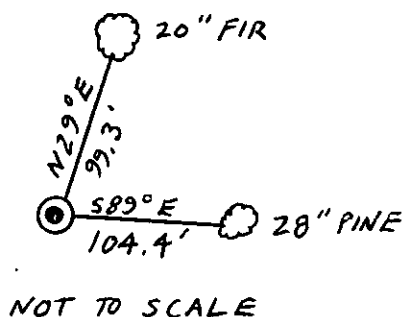


SET 1 INCH DIAMETER GALVANIZED
PIPE 22 INCHES IN THE GROUND



WITH 2 3/8 INCH DIAMETER
BRASS CAP AS MARKED ABOVE.

FROM WHICH: A 20" FIR BEARS N29°E 99.3' DISTANCE MARKED WITH ONE BLAZE;
A 28" PINE BEARS S89°E 104.4' DISTANCE, MARKED WITH ONE BLAZE.



SKETCH OF CORNER

CERTIFICATION

I, AARON J. GUZMAN, L.S.I.

Certify the information shown herein is true and correct.

Aaron J. Guzman
Signature Ground Party Chief

I, SAMUEL CORDI, R.L.S.

certify that this Corner Record correctly represents work performed by me or under my direction in compliance with the "Corner Recordation Act" (70-22-101, et seq., M.C.A.)

Sam Cordi
Signature of Surveyor & Seal

Date: 9/23/08 Reg. No. 13102

Employer: SAM CORDI LAND SURVEYING & MAPPING, INC.

Office of Clerk and Recorder, County of

This "corner

214514 BOOK: CCR CC&R'S PAGE: 11273 Pages: 1

record" was filed for recon

STATE OF MONTANA LINCOLN COUNTY

was noted on the cross-ind

RECORDED: 09/23/2008 11:15 KOI: CC&R'S

book no. _____

TAMMY D. LAUER CLERK AND RECORDER

FEE: \$0.00

BY: Samuel Cordi

TO: SAM CORDI P.O. BOX 323, WHITEFISH MT. 59937

County Official

Cross Index No. X-11 T. 36 R. 28 PMM

Corner this sheet