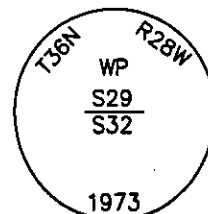


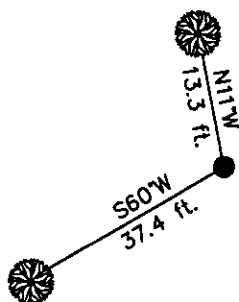
CERTIFIED CORNER RECORDATION

Corner WP S29 S32 T. 36 N. R. 28 W. P.M.M. LINCOLN County

- I. Record: 1903 Subdivision and Meander lines of T36N, R28W. by Peter M. Cardell and Abraham L. Rinearson and Gordon G. Smith;
1972 U. S. Army Corp of Engineers Libby Dam-Lake Koocanusa Project, District File No. E 53-1-154, Sheet 28 of 37; W.P. standard U. S. C. E. conc. mon. and brass cap.
- II. Found a 4 1/2 in. x 4 1/2 in. concrete post, firmly set, 3 ins. above ground with a 3 1/2 in. diam. Army Corp of Engineers brass cap marked as shown, from which:
A fir, 10 ins. diam, bears S60°W, 37.4 ft. dist., mkd. with a healed face.
A fir, 7 ins. diam, bears N11°W, 13.3 ft. dist., mkd. with a healed face.
- III. Painted red the scribed face and a red band around the bearing trees. Attached Bearing Tree and Land Survey Monument signs.



Date of Fieldwork: 8/28/2006
Survey crew: Tom Hommel
Magnetic declination: 20° East assumed
Equipment used: Hand compass and loggers tape
U.S. Forest Service, Supervisors Office, 1101 Hwy. 2 West, Libby, MT 59923 (406) 293-6211



SKETCH OF CORNER

NOT TO SCALE

CERTIFICATION

I, Thomas M. Hommel 10800LS
certify the information shown herein is true and correct.

Steven A. Beyer
Signature of Group Party Chief

I, Steven A. Beyer
certify that this Corner Record correctly represents work performed by me or under my direction in compliance with the "Corner Recordation Act" (70-22-101, et seq., M.C.A.)

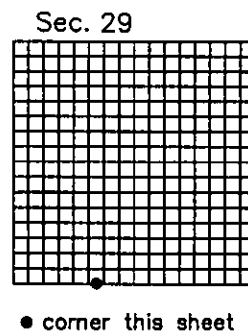
Steven A. Beyer
Signature of Surveyor

Date: 11/06/2006 Reg. No. 9750LS
Employer: U. S. Forest Service

Office of Clerk and Recorder, County of Lincoln This "corner

199636 BOOK: CCR CC&R'S PAGE: 10970 Pages: 1
STATE OF MONTANA LINCOLN COUNTY
RECORDED: 12/13/2006 12:50 KOI: CC&R'S
CORAL M. CUMMINGS CLERK AND RECORDER
FEE: \$0.00 BY: Leanne Dennis
TO: US FOREST SERVICE

Cross Index No. S29 WP S32 T. 36N. R. 28W. P.M., MT
Adopted July 1, 1981, Montana Board of Professional Engineers & Land Surveyors



• corner this sheet