

CERTIFIED CORNER RECORDATION

Corner 1/4 S20|S21 T. 36 N. R. 28 W. P.M.M. LINCOLN County

I. Record: 1903 Subdivision and Meander lines of T36N. R28W. by Peter M. Cardell and Abraham L. Rinearson and Gordon G. Smith: Set a limestone, 13x10x8 ins., 9 ins. ground, for 1/4 sec. cor. marked 1/4 on W. face; from which:

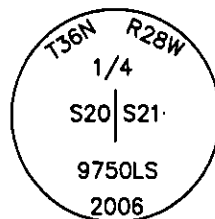
A pine, 20 ins. diam, bears S40°E, 43 lks. dist., marked 1/4 S 21 BT.
A pine, 16 ins. diam, bears S88°W, 21 lks. dist., marked 1/4 S 20 BT.

II. Found a 8x10 in. stone, firmly set and marked 1/4 on West face, from which:

A pine snag, 11 ins. diam., broken off at 15 ft. above ground, bears S88°W, 13.7 ft. dist., marked 1/4 S 20 BT.

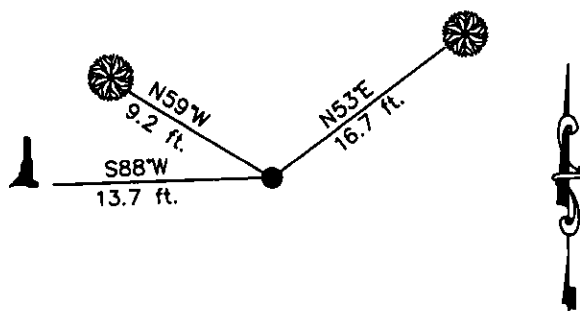
III. In the position of the found stone, set a 2 1/2 in. diam., 30 in. long aluminum pipe, 24 ins. in the ground with a 3 1/4 in. diam. aluminum cap marked as shown, from which the new bearing trees:

A fir, 6 ins. diam, bears N53°E, 16.7 ft. dist., marked 1/4 S 21 BT.
A fir, 6 ins. diam, bears N59°W, 9.2 ft. dist., marked 1/4 S 20 BT.



Painted red the scribed face and a red band around the bearing trees. Attached Land Survey Monument signs.

Date of Fieldwork: 6/28/2006
Survey crew: Steve Boyer, Tom Hommel
Magnetic declination: 20° East assumed
Equipment used: Hand compass and loggers tape
U.S. Forest Service, Supervisors Office, 1101 Hwy. 2 West, Libby, MT 59923 (406) 293-6211



SKETCH OF CORNER

NOT TO SCALE

CERTIFICATION

I, Thomas M. Hommel 10800LS
certify the information shown herein is true and correct.

[Signature]
Signature Ground Party Chief

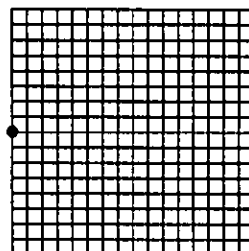
I, Steven A. Boyer
certify that this Corner Record correctly represents work performed by me or under my direction in compliance with the "Corner Recordation Act" (MCA, 82-101, et seq., M.C.A.)

[Signature]
Signature of Surveyor & Seal

Date: 11/06/2006 Reg. No. 9750LS

Employer: U. S. Forest Service

Sec. 21



• corner this sheet

Office of Clerk and Recorder, County of Lincoln This "corner

199635 BOOK: CCR CC&R'S PAGE: 10969 Pages: 1
STATE OF MONTANA LINCOLN COUNTY
RECORDED: 12/13/2006 12:49 KOI: CC&R'S
CORAL M. CUMMINGS CLERK AND RECORDER
FEE: \$0.00 BY: [Signature]
TO: US FOREST SERVICE

Cross Index No. P-9 T. 36N. R. 28W. P.M., MT
Adopted July 1, 1981, Montana Board of Professional Engineers & Land Surveyors