

CERTIFIED CORNER RECORDATION

Corner 1/4 S33 T. 36 N. R. 28 W. P.M.M. LINCOLN County

I. Record: 1903 Subdivision and Meander lines of T36N, R28W, by Peter M. Cardell and Abraham L. Rinearson and Gordon G. Smith; Set a washed boulder, 13x8x7 ins., 9 ins. ground, for 1/4 sec. cor. marked 1/4 on N. face; from which:

- A fir, 16 ins. diam, bears N43°W, 50 lks. dist., marked 1/4 S 28 BT.
- A fir, 15 ins. diam, bears S25°E, 31 lks. dist., marked 1/4 S 33 BT.

1972 Army Corp of Engineers Libby Dam-Lake Koocanusa Project, District File No. E 53-1-154, Sheet 28 of 37; Iron pipe with bronze cap, BT and 2 stumps.

II. Found a 2 in. diam. iron pipe, firmly set, 12 ins. above ground, firmly set, with a 2 1/2 in. diam. U. S. Army Corp of Engineers brass cap marked as shown, from which:

- A larch snag, 16 ins. diam., bears N64°E, 48.3 ft. dist., S/R visible.
- A fir root crown and rotten remains, bears S25°E, 20.5 ft. dist., 1/4 S33 B visible.
- A small depression in the ground, bears N43°W, 33.0 ft. dist.

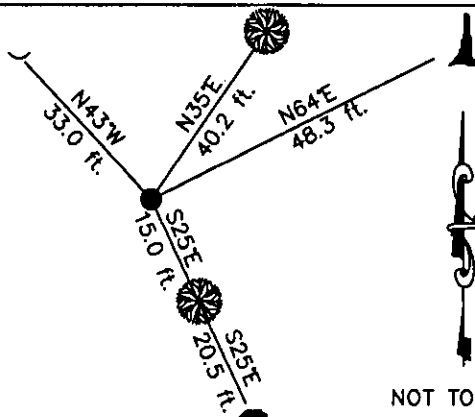
III. Establish 2 new bearing trees:

- A pine, 9 ins. diam, bears N35°E, 40.2 ft. dist., marked 1/4 S 28 BT.
- A fir, 6 ins. diam, bears S25°E, 15.0 ft. dist., marked 1/4 S 33 BT.

Painted red the scribed face and a red band around the bearing trees. Attached Land Survey Monument signs.



Date of Fieldwork: 6/27/2006
Survey crew: Steve Boyer, Tom Hommel
Magnetic declination: 20° East assumed
Equipment used: Hand compass and loggers tape
U.S. Forest Service, Supervisors Office, 1101 Hwy. 2 West, Libby, MT 59923 (406) 293-6211



SKETCH OF CORNER

NOT TO SCALE

CERTIFICATION

I, Thomas M. Hommel 10800LS
certify the information shown herein is true and correct.

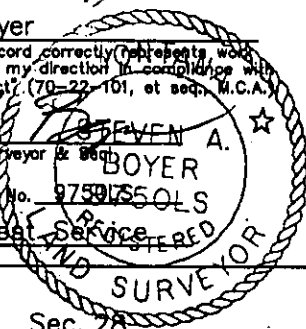
[Signature]
Signature Ground Party Chief

I, Steven A. Boyer
certify that this Corner Record correctly represents work performed by me or under my direction in compliance with the "Corner Recordation Act" (70-22-101, et seq., M.C.A.)

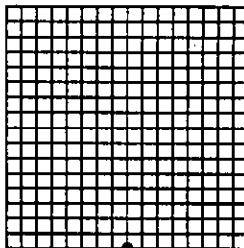
[Signature]
Signature of Surveyor & Recorder

Date: 11/06/2006 Reg. No. 97591550LS

Employer: U. S. Forest Service



Sec. 28



• corner this sheet

Office of Clerk and Recorder, County of Lincoln This "corner

199634 BOOK: CCR CC&R'S PAGE: 10968 Pages: 1

STATE OF MONTANA LINCOLN COUNTY

RECORDED: 12/13/2006 12:48 KOI: CC&R'S

CORAL M. CUMMINGS CLERK AND RECORDER

FEE: \$0.00

BY: *[Signature]*

TO: US FOREST SERVICE

Cross Index No. V-11 T. 36N. R. 28W. P.M., MT

Adopted July 1, 1981, Montana Board of Professional Engineers & Land Surveyors