

CERTIFIED CORNER RECORDATION

Corner 1/4 S30 | S29 T. 36 N. R. 28 W. P.M.M. LINCOLN County

I. Record: 1903 Subdivision and Meander lines of T36N, R28W. by Peter M. Cardell and Abraham L. Rinearson and Gordon G. Smith; Set a basalt stone, 20x8x8 ins., 15 ins. ground, for 1/4 sec. cor., marked 1/4 on W. face; from which:

- A pine, 4 ins. diam, bears S50°E, 31 lks. dist., marked 1/4 S 29 BT.
- A fir, 8 ins. diam, bears S51°45'W, 60 lks. dist., marked 1/4 S 30 BT.

1966 BLM Remonumentation by Roy G. Leedy: The 1/4 sec. cor. for secs. 29 and 30, monumented with a basalt stone, 20x8x8 ins., firmly set in a mound of stone, and witnessed by the remains of the original bearing trees and a bearing tree of unknown origin:

The original bearing trees:

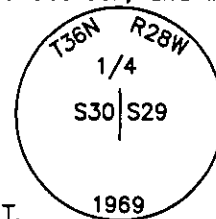
- A stump hole, bears S50°E, 31 lks. dist.
- A stump, bears S51 3/4°W, 60 lks. dist., marked 1/4 S 30 BT.

A bearing tree of unknown origin:

- A pine, 6 ins. diam, bears S46°W, 11 lks. dist., marked 1/4 S 30 BT.

At the corner point

Set an iron pipe, 30 ins. long, 2 1/2 ins. diam., 8 ins. in the ground, to bedrock, and in a mound of stone, 4 ft. diam., to top, with brass cap mkd.



from which

- A pine, 6 ins. diam, bears S46°W, 11 lks. dist., marked 1/4 S 30 BT.

Bury the original stone alongside the iron post.

II. Found a 2 1/2 in. diam. iron pipe, firmly set, with 3 1/4 in. diam. BLM brass cap in a collar of stone, marked as shown above, from which:

- A pine snag, 14 ins. diam, bears S63°E, 23.5 ft. dist., marked 1/4 S 29 BT.
- A fir stump, bears S52°W, 40.2 ft. dist., marked 1/4 S 30 BT.
- A pine rootcrown and rotten log, bears S44°W, 7.3 ft. dist., marked 1/4 S 30 BT.

III. Established 2 new bearing trees:

- A pine, 19 ins. diam, bears S52°E, 33.7 ft. dist., marked 1/4 S 29 BT.
- A pine, 10 ins. diam, bears S46°W, 54.75 ft. dist., marked 1/4 S 30 BT.

Painted red the scribed face and a red band around the bearing trees. Attached Land Survey Monument signs.

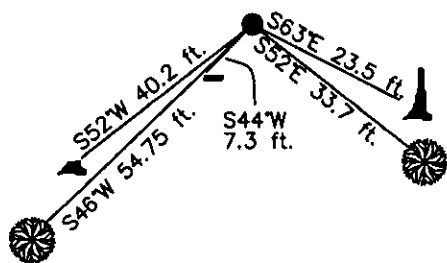
Date of Fieldwork: 6/26/2006

Survey crew: Steve Boyer, Tom Hommel

Magnetic declination: 20° East assumed

Equipment used: Hand compass and loggers tape

U.S. Forest Service, Supervisors Office, 1101 Hwy. 2 West, Libby, MT 59923 (406) 293-6211



SKETCH OF CORNER

NOT TO SCALE

CERTIFICATION

I, Thomas M. Hommel 10800LS
certify the information shown herein is true and correct.

Signature Ground Party Chief

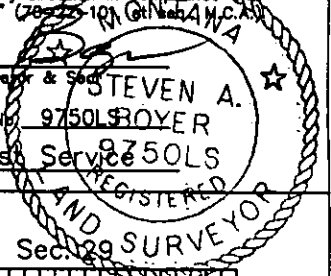
Steven A. Boyer

I, Steven A. Boyer
certify that this Corner Record correctly represents work performed by me or under my direction in compliance with the "Corner Recordation Act" (78-225-101, 102, 103, 104, M.C.A.)

Signature of Surveyor & Seal

Date: 11/06/2006 Reg. No. 9750LS BOYER

Employer: U. S. Forest Service



Office of Clerk and Recorder, County of Lincoln This "corner

199632 BOOK: CCR CC&R'S PAGE: 10966 Pages: 1
STATE OF MONTANA LINCOLN COUNTY
RECORDED: 12/13/2006 12:46 KOI: CC&R'S
CORAL M. CUMMINGS CLERK AND RECORDER
FEE: \$0.00 BY: Deanne Leum
TO: US FOREST SERVICE

Cross Index No. T-5 T. 36N. R. 28W. P.M., MT

Adopted July 1, 1981, Montana Board of Professional Engineers & Land Surveyors

• corner this sheet