

# CERTIFIED CORNER RECORDATION

Corner S20  
1/4 S29 T 36 N. R. 28 W. P.M.M. LINCOLN County

I. Record: 1903 Subdivision and Meander lines of T36N, R28W, by Peter M. Cardell and Abraham L. Rinearson and Gordon G. Smith: Set a limestone, 13x9x9 ins., 9 ins. the ground, for 1/4 sec. cor. marked 1/4 on N. face; from which:

A tamarack, 12 ins. diam, bears N31 1/4°W, 40 lks. dist., marked 1/4 S 20 BT.  
A tamarack, 14 ins. diam, bears S46°W, 32 lks. dist., marked 1/4 S 29 BT.

1969 Certified Corner Recordation by Lawrence A. Sigani, WA Reg. No. 11422; Original stone for 1/4 cor not recovered. The two BT were found as described. Set an 1" iron rebar, 4" above ground by intersection from the BT. Rebar stamped:  
Marked new BT 40" pine bears S16°, 43.5', mkd. FS/RM

1969 BLM Remountment by Roy G. Leedy: The 1/4 sec. cor. of secs. 20 and 29, monumented with a rebar, 28 ins. long, 1 in. diam., firmly set, with the original stone buried alongside, (a limestone, 13x9x9 ins., mkd. 1/4) and witnessed by the original bearing trees:

A larch, 16 ins. diam, bears S49°W, 32 lks. dist., marked 1/4 S 29 BT. (Record: S46°W)  
A larch, 16 ins. diam, bears N31 1/4°W, 40 lks. dist., marked 1/4 S 20 BT.  
At the corner point  
Set an iron post, 30 ins. long, 2 1/2 ins. diam., 18 ins. in the ground, to bedrock, and in a mound of stone, 3 ft. diam., to top, with brass cap mkd.  
bury the original stone and rebar alongside the iron post.

1972 Army Corp of Engineers Libby Dam-Lake Kooconusa Project. District File No. E 53-1-154, Sheet 29 of 37: 1" rebar, 2 BT's & 1 F.S.R.M.

II. Found a 2 1/2 in. diam. iron pipe, firmly set, 6 ins. above ground, firmly set, with a 3 1/4 in. diam. BLM brass cap marked as shown, from which:

A pine, 34 ins. diam., bears S12°E, 42.9 ft. dist., FSRM visible.  
A larch, 14 ins. diam., bears S50°W, 21.6 ft. dist., 1/4 S29 B visible.  
A broken larch snag, bears N32°W, 27.0 ft. dist., S20 BT visible.

III. Establish 1 new bearing tree:

A fir, 6 ins. diam, bears N10°W, 45.4 ft. dist., marked 1/4 S20 BT.

Painted red the scribed face and a red band around the bearing trees. Attached Bearing Tree and Land Survey Monument signs.

Date of Fieldwork: 6/26/2006

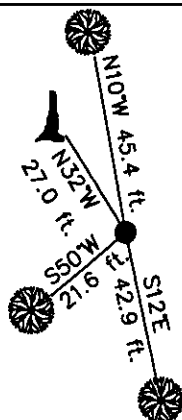
Survey crew: Steve Boyer, Tom Hommel

Magnetic declination: 20° East assumed

Equipment used: Hand compass and loggers tape

U.S. Forest Service, Supervisors Office, 1101 Hwy. 2 West, Libby, MT 59923 (406) 293-6211

SKETCH OF CORNER



NOT TO SCALE

## CERTIFICATION

I, Thomas M. Hommel 10800LS  
certify the information shown herein is true and correct.

Signature of Ground Party Chief

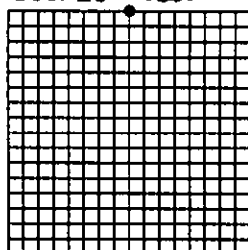
I, Steven A. Boyer  
certify that this Corner Record correctly represents work performed by me or under my direction in compliance with the "Corner Recordation Act" (20-22-101, et seq., M.C.A.)

Signature of Surveyor & Seal

Date: 11/06/2006 Reg. No. 9750LS

Employer: U. S. Forest Service

Sec. 29



• corner this sheet

Office of Clerk and Recorder, County of Lincoln This "corner

199631 BOOK: CCR CC&R'S PAGE: 10965 Pages: 1

STATE OF MONTANA LINCOLN COUNTY

RECORDED: 12/13/2006 12:45 KOI: CC&R'S

CORAL M. CUMMINGS CLERK AND RECORDER

FEE: \$0.00

BY: Leanne Starni

TO: US FOREST SERVICE

Cross Index No. R-7 T. 36N. R. 28W. P.M., MT

Adopted July 1, 1981, Montana Board of Professional Engineers & Land Surveyors