

# CERTIFIED CORNER RECORDATION

S30 | S29  
S31 | S32

Corner \_\_\_\_\_ T. 36 N. R. 28 W. P.M.M. LINCOLN County

I. Record: 1903 Subdivision and Meander lines of T36N, R28W, by Peter M. Cardell and Abraham L. Rinearson and Gordon G. Smith: Set a limestone, 18x10x5 ins., 12 ins. ground, for cor. of secs. 29, 30, 31 and 32, marked with 1 notch on S. and 5 notches on E. edge; from which:

- A fir, 8 ins. diam, bears N75 1/2°E, 25 lks. dist., marked T36N R28W S 29 BT.
- A fir, 16 ins. diam, bears S45°E, 14 lks. dist., marked T36N R28W S 32 BT.
- A fir, 12 ins. diam, bears S31°W, 21 lks. dist., marked T36N R28W S 31 BT.
- A fir, 14 ins. diam, bears N9°W, 16 lks. dist., marked T36N R28W S 30 BT.

1967 Certified Corner Recordation by J. W. Ninneman, Mt. Reg. No. 534ES: Found Aug. 31, 1966 Original stone firmly in place marked as reported—Found all four bearing trees—BUT—only NE BT alive SE BT Dead—standing—partly legible SW BT a windfall—entirely legible NW BT a snag about 17' high—legible. We set a STD Brass cap monument marked

T36N R28W  
S30 | S29  
S31 | S32

In a mound of stone—Stone alongside—we tagged ALL four bearing trees with Std. FS BT signs Twp 36N.R. 28W

1972 Army Corp of Engineers Libby Dam—Lake Koocanusa Project, District File No. E 53-1-154. Sheet 28 of 37: Brass cap & 4 B.T.'s

II. Found a 2 in. diam. iron pipe, firmly set, 12 ins. above ground, in a mound of stone, with a 2 1/2 in. diam. brass cap marked as shown, from which:

- A fir, 13 ins. diam., bears N76°E, 16.5 ft. dist., with S29 BT visible.
- A fir stump, 18 ins. diam., bears S45°E, 9.5 ft. dist., 36 R28 visible.
- A pine, 14 ins. diam., bears S4°E, 50.4 ft. dist., with healed face.
- A fir root crown and rotten remains, bears S31°W, 14.0 ft. dist., with visible ax marks.
- A down fir snag, 10 ins. diam., with root crown, bears S48°W, 36.5 ft. dist., with S31 BT visible.
- A down fir snag, 5 ins. diam., bears N68°W, 11.0 ft. dist., with S30 BT visible.
- A fir stump, 16 ins. diam., bears N8°W, 9.5 ft. dist., with T36N R28W S30 BT visible.

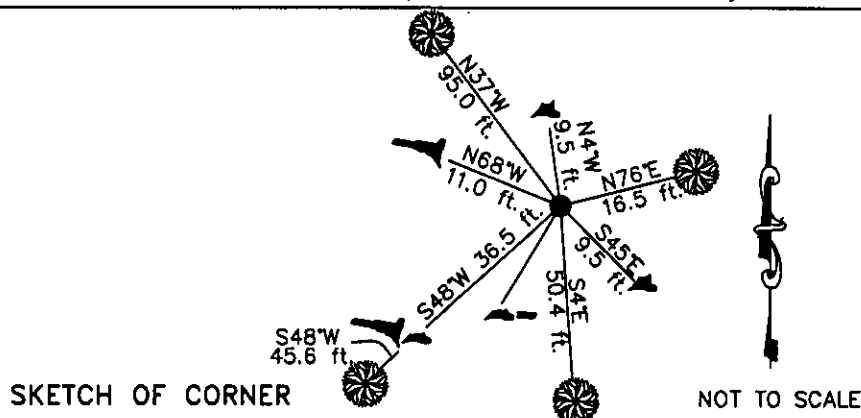
T36N R28W  
S30 | S29  
S31 | S32  
1966

III. Repaired mound of stone and established 2 new bearing trees:

- A pine, 9 ins. diam, bears S48°W, 45.6 ft. dist., scribed T36N R28W S31 BT.
- A pine, 8 ins. diam, bears N37°W, 95.0 ft. dist., scribed T36N R28W S30 BT.

Painted red the scribed face and a red band around the bearing trees. Attached Bearing Tree Land Survey Monument signs.

Date of Fieldwork: 6/26/2006  
Survey crew: Steve Boyer, Tom Hommel  
Magnetic declination: 20° East assumed  
Equipment used: Hand compass and loggers tape  
U.S. Forest Service, Supervisors Office, 1101 Hwy. 2 West, Libby, MT 59923 (406) 293-6211



SKETCH OF CORNER

NOT TO SCALE

## CERTIFICATION

I, Thomas M. Hommel 10800LS  
certify the information shown herein is true and correct.

Signature Ground Party Chief

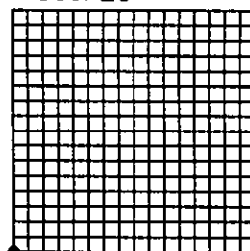
I, Steven A. Boyer  
certify that this Corner Record correctly represents work performed by me or under my direction in compliance with the "Corner Recordation Act" (22-29-101, et seq., M.C.A.)

Signature of Surveyor & Seal

Date: 11/06/2006 Reg. No. 97505750LS

Employer: U. S. Forest Service

Sec. 29



• corner this sheet

Office of Clerk and Recorder, County of Lincoln This "corner

199630 BOOK: CCR CC&R'S PAGE: 10964 Pages: 1  
STATE OF MONTANA LINCOLN COUNTY  
RECORDED: 12/13/2006 12:44 KOI: CC&R'S  
CORAL M. CUMMINGS CLERK AND RECORDER  
FEE: \$0.00 BY: *Leanne A. Burns*  
TO: US FOREST SERVICE

Cross Index No. V-5 T. 36N. R. 28W. P.M., MT

Adopted July 1, 1981, Montana Board of Professional Engineers & Land Surveyors