

CERTIFIED CORNER RECORDATION

Corner COR 2 TRACT 3C S29 T. 36 N. R. 28 W. P.M.M. LINCOLN County

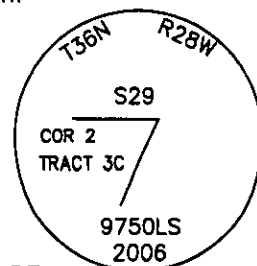
I. Record: 1903 Subdivision and Meander lines of T36N, R28W, by Peter M. Cardell and Abraham L. Rinearson and Gordon G. Smith

1964 Plat No. 967 by L. M. Powell, Mt. Reg. No. 2196S: Describes a 20 acre tract of land located in the SW1/4NE1/4 of Sec. 29, T.36N., R.28W. (NOTE: Plat does not show any monumentation. This would be the parent parcel for Tract 3C.)

1977 Libby Dam-Lake Koocanusa Project Real Estate Map, Segment 28, Sheet 28 of 60: Depicts a triangular parcel, 330 ft. by 660 ft. with an unstated distance for the third side, adjoining the Northwest boundary of C.O.E. Tract 2802, which is located in the SW1/4NE1/4 of Sec. 29, T.36N., R.28W. (NOTE: Map does not show any monumentation.)

II. No evidence found for this corner.

III. At the position for COR 2 TRACT 3C as determined by survey, set a 5/8 in. diam. by 24 in. long rebar, 21 ins. in the ground, with 3 1/4 in. diam. aluminum cap marked as shown:



From which the new bearing trees:

A fir, 11 ins. diam., bears N18°E, 15.4 ft. dist., scribed 2 TR 3C BT.

A ponderosa pine, 6 ins. diam., bears S38°E, 22.9 ft. dist., scribed 2 TR 3C BT.

Painted red the scribed face and a red band around the bearing trees. Attached Bearing Tree and Land Survey Monument signs.

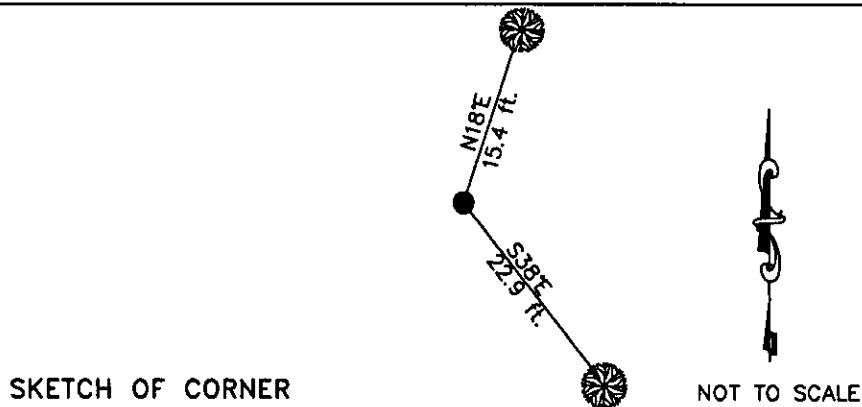
Date of Fieldwork: 10/4/2006

Survey crew: Steve Boyer, Tom Hommel

Magnetic declination: 20° East assumed

Equipment used: Hand compass and loggers tape

U.S. Forest Service, Supervisors Office, 1101 Hwy. 2 West, Libby, MT 59923 (406) 293-6211



CERTIFICATION
I, Thomas M. Hommel 10800LS
certify the information shown herein is true and correct.
Thomas M. Hommel
Signature Ground Party Chief
I, Steven A. Boyer
certify that this Corner Record correctly represents work performed by me or under my direction in compliance with the "Corner Recordation Act" 70-22-501 et seq., M.C.A.
Steven A. Boyer
Signature of Surveyor & Seal
Date: 11/06/2006 Reg. No. 9750LS
Employer: U. S. Forest Service

Office of Clerk and Recorder, County of Lincoln This "corner

199628 BOOK: CCR CC&R'S PAGE: 10962 Pages: 1

STATE OF MONTANA LINCOLN COUNTY

RECORDED: 12/13/2006 1:42 KOI: CC&R'S

CORAL M. CUMMINGS CLERK AND RECORDER

FEE: \$0.00

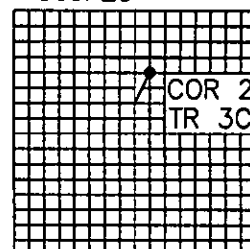
BY: Steven A. Boyer

TO: US FOREST SERVICE

Cross Index No. COR 2 TRACT 3C T. 36N. R. 28W. P.M., MT

Adopted July 1, 1981, Montana Board of Professional Engineers & Land Surveyors

Sec. 29



• corner this sheet