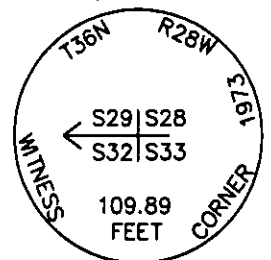


CERTIFIED CORNER RECORDATION

Corner EAST WC S29|S28
S32|S33 T. 36 N. R. 28 W. P.M.M. LINCOLN County

- I. Record: 1903 Subdivision and Meander lines of T36N, R28W, by Peter M. Cardell and Abraham L. Rinegarson and Gordon G. Smith: Set a stone for cor. of secs. 28, 29, 32 and 33 and four bearing trees.
- 1972 U. S. Army Corp of Engineers Libby Dam-Lake Koocanusa Project, District File No. E 53-1-154, Sheet 28 of 37: Found a stone, BT and 2 stumps. Set a standard U.S.C.E. concrete monument 109.89 feet east of the corner.
- II. Found a 4 1/2 in. x 4 1/2 in. concrete post, firmly set, 6 ins. above ground with a 3 1/2 in. diam. Army Corp of Engineers brass cap marked as shown, from which:
- A fir, 9 ins. diam, bears S1°E, 21.2 ft. dist., mkd. with a healed face.
A fir, 13 ins. diam, bears N10°W, 6.9 ft. dist., mkd. with a healed face.
- III. Painted red the scribed face and a red band around the bearing trees. Attached Land Survey Monument signs.



Date of Fieldwork: 8/29/2006
Survey crew: Steve Boyer
Magnetic declination: 20° East assumed
Equipment used: Hand compass and loggers tape
U.S. Forest Service, Supervisors Office, 1101 Hwy. 2 West, Libby, MT 59923 (406) 293-6211

SKETCH OF CORNER



NOT TO SCALE

CERTIFICATION

I, Steven A. Boyer 9750LS
certify the information shown herein is true and correct.

Signature Ground Party Chief

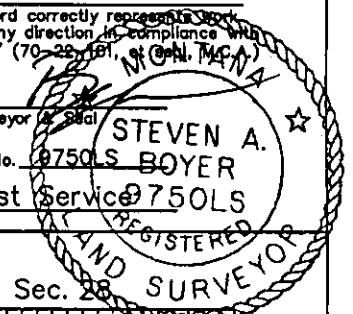
Steven A. Boyer

I, Steven A. Boyer
certify that this Corner Record correctly represents work performed by me or under my direction in compliance with the "Corner Recordation Act" (70-22-181, et seq., M.C.A.)

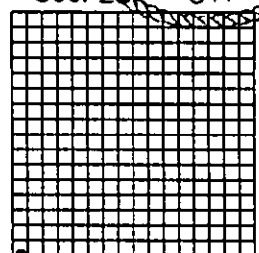
Signature of Surveyor Steven A. Boyer

Date: 11/06/2006 Reg. No. 9750LS BOYER

Employer: U. S. Forest Service 9750LS



Sec. 28



• corner this sheet

Office of Clerk and Recorder, County of Lincoln This "corner"
199627 BOOK: CCR CC&R'S PAGE: 10961 Pages: 1
STATE OF MONTANA LINCOLN COUNTY
RECORDED: 12/13/2006 12:41 KOI: CC&R'S
CORAL M. CUMMINGS CLERK AND RECORDER
FEE: \$0.00 BY: Heather L. Smith
TO: US FOREST SERVICE

Cross Index No. EAST WC S29|S28
S32|S33 T. 36N. R. 28W. P.M., MT
Adopted July 1, 1981, Montana Board of Professional Engineers & Land Surveyors