

# CERTIFIED CORNER RECORDATION

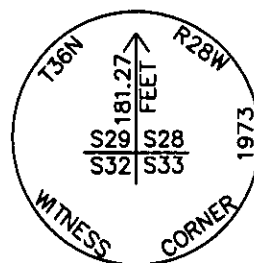
Corner SOUTH WC S29|S28 S32|S33 T. 36 N. R. 28 W. P.M.M. LINCOLN County

I. Record: 1903 Subdivision and Meander lines of T36N, R28W, by Peter M. Cardell and Abraham L. Rinearson and Gordon G. Smith; Set a stone for cor. of secs. 28, 29, 32 and 33 and four bearing trees.

1972 U. S. Army Corp of Engineers Libby Dam-Lake Koocanusa Project, District File No. E 53-1-154, Sheet 28 of 37; Found a stone, BT and 2 stumps. Set a standard U.S.C.E. concrete monument 181.27 feet south of the corner.

II. Found a 4 1/2 in. x 4 1/2 in. concrete post, firmly set, 5 ins. above ground with a 3 1/2 in. diam. Army Corp of Engineers brass cap marked as shown, from which:

A fir, 11 ins. diam, bears S76°W, 67.6 ft. dist., mkd. with a healed face.



III. Painted red the scribed face and a red band around the bearing trees. Attached Land Survey Monument signs.

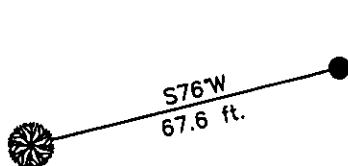
Date of Fieldwork: 8/29/2006

Survey crew: Steve Boyer

Magnetic declination: 20° East assumed

Equipment used: Hand compass and loggers tape

U.S. Forest Service, Supervisors Office, 1101 Hwy. 2 West, Libby, MT 59923 (406) 293-6211



NOT TO SCALE

SKETCH OF CORNER

## CERTIFICATION

I, Steven A. Boyer 9750LS  
certify the information shown herein is true and correct.

Signature Ground Party Chief

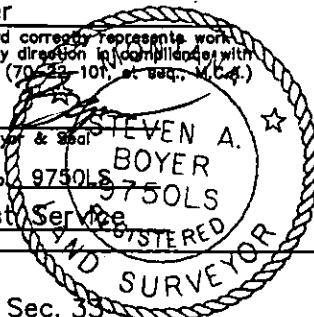
Steven A. Boyer

I, Steven A. Boyer  
certify that this Corner Record correctly represents work performed by me or under my direction in compliance with the "Corner Recordation Act" (70-25-101, et seq., M.C.A.)

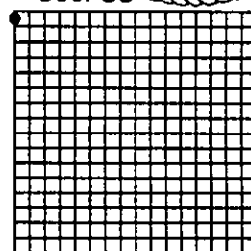
Signature of Surveyor & Seal

Date: 11/06/2006 Reg. No. 9750LS

Employer: U. S. Forest Service



Sec. 33



• corner this sheet

Office of Clerk and Recorder, County of Lincoln This "corner

199626 BOOK: CCR CC&R'S PAGE: 10960 Pages: 1

STATE OF MONTANA LINCOLN COUNTY

RECORDED: 12/13/2006 12:40 KOI: CC&R'S

CORAL M. CUMMINGS CLERK AND RECORDER

FEE: \$0.00

BY:

TO: US FOREST SERVICE

S29|S28

Cross Index No. SOUTH WC S32|S33 T. 36N. R. 28W. P.M., MT

Adopted July 1, 1981, Montana Board of Professional Engineers & Land Surveyors