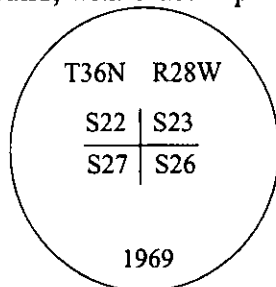


CERTIFIED CORNER RECORDATION

Corner NW Sec. 26 T. 36N R. 28W P.M., MT Lincoln County

- I. 1903 G.L.O. Original Record by Gordon B. Smith et. al.: Set a porphyry stone, 16x8x7 ins., 11 ins. in the ground, for corner of sections 22, 23, 26, and 27, marked with 2 notches on South and East Edges. Established four bearing trees.

1969 B.L.M. Remonumentation Record by Roy G. Leedy: The corner of secs. 22, 23, 26 and 27, monumented with a porphyry stone, 16x8x7 ins., firmly set, mkd. with 2 notches on the E. and S. edges, and witnessed by the remains of the original bearing trees. At the corner point, set an iron post, 30 ins. long, 2 1/2 ins. diam., 24 ins. in the ground, with brass cap mkd. as shown.



Established three new bearing trees:

- A pine, 6 ins. diam., bears S57°E, 72 lks. dist., mkd. "T36N R28W S26 BT".
- A pine, 6 ins. diam., bears S52 1/4°W, 68 lks. dist., mkd. "T36N R28W S27 BT".
- A pine, 6 ins. diam., bears N59 1/4°W, 137 lks. dist., mkd. "T36N R28W S22 BT".

Bury the original stone alongside the iron post, this corner is situated at the intersection of fences extending North and South Southeast.

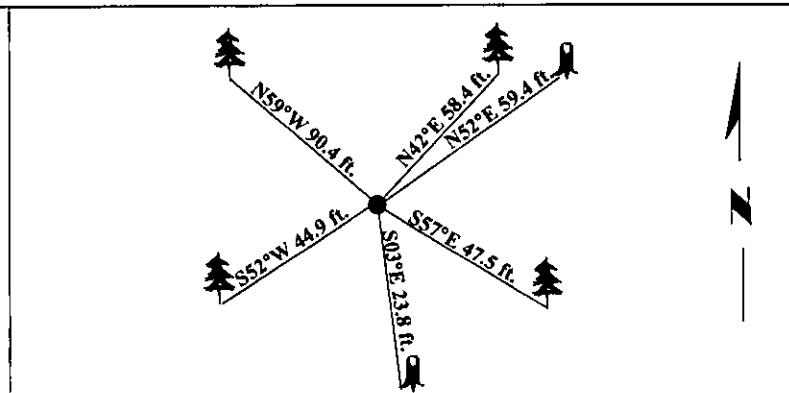
- II. Found a 2 1/2 in. diam. iron pipe, protruding 3 ins. above ground, with a 3 1/4 in. diam. B.L.M. brass cap mkd. as shown.

from which:

- A pine, 13 ins. diam., bears N42°E, 58.4 ft. dist., with visible scribing. (No record)
- A stump, bears N52°E, 59.4 ft. dist., with "BT" visible. (G.L.O. record)
- A stump, bears S03°E, 23.8 ft. dist., visible face, no scribing. (G.L.O. record)
- A pine, 10 ins. diam., bears S57°E, 47.5 ft. dist., with a healed face. (B.L.M. record)
- A pine, 10 ins. diam., bears S52°W, 44.9 ft. dist., with a healed face. (B.L.M. record)
- A pine, 13 ins. diam., bears N59°W, 90.4 ft. dist., with a healed face. (B.L.M. record)

- III. Painted bearing trees and attached Land Survey Monument and Bearing Tree signs. Take the main Pinkham Cr. Rd. to cattle guard and fences, go North, 500 ft. along fence to corner.

Magnetic Declination: 20° East



SKETCH OF CORNER

CERTIFICATION

I, Thomas M. Hommel
certify the information shown herein is true and correct.

I, Ronald A. Pearson
certify that this Corner Record correctly represents work performed by me or under my direction in compliance with the "Corner Recordation Act" (70-22-101 et seq., M.C.A.)

Signature of Surveyor & Seal

Date: 3/16/98

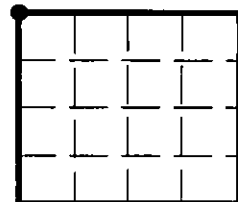
Reg. No.: 9008LS

Employer: U.S. FOREST SERVICE

Office of Clerk and Recorder, County of Lincoln. This "corner record" was filed for record on 7-1-98 and was noted on the cross-index plat and is assigned page No. 10126 in book No. _____.

Carol M. Cumming
County Official

Sec. 26



● - corner this sheet