

CERTIFIED CORNER RECORDATION

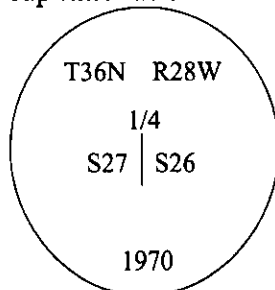
Corner 1/4 Secs. 26 & 27 T. 36N R. 28W P.M., MT Lincoln County

- I. 1903 G.L.O. Original Record by Gordon B. Smith et. al.: Set a porphyry stone, 12x9x8 ins., 8 ins. in the ground, for 1/4 sec. cor., mkd. "1/4" on W. face.

Established two bearing trees:

A tamarack, 9 ins. diam., bears S83 1/2°E, 30 lks. dist., mkd. "1/4 S26 BT".
A fir, 24 ins. diam., bears N29°W, 46 lks. dist., mkd. "1/4 S27 BT".

1970 B.L.M. Remonumentation Record by Joseph E. French: The 1/4 sec. cor. of secs. 26 and 27, monumented with a porphyry stone, 12x9x8 ins., firmly set, mkd. "1/4" on the W. face and witnessed by the remains of the original bearing trees. At the corner point, set an iron post, 30 ins. long, 2 1/2 ins. diam., 24 ins. in the ground, with brass cap mkd. as shown.



Established two new bearing trees:

A fir, 6 ins. diam., bears S22 1/2°E, 40 lks. dist., mkd. "1/4 S26 BT".
A larch, 11 ins. diam., bears N71°W, 33 lks. dist., mkd. "1/4 S27 BT".

Bury the original stone alongside the iron post.

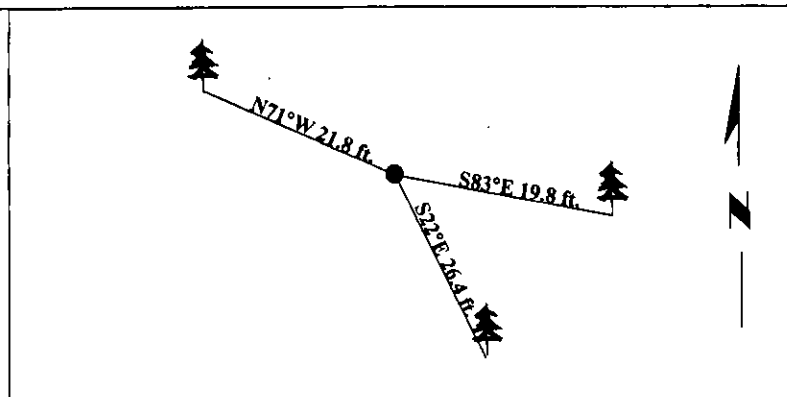
- II. Found a 2 1/2 in. diam. iron pipe, protruding 6 ins. above ground, with a 3 1/4 in. diam. B.L.M. brass cap mkd. as shown.

from which:

A fir, 12 ins. diam., bears S22°E, 26.4 ft. dist., with a healed face. (B.L.M. record)
A larch, 19 ins. diam., bears S83°E, 19.8 ft. dist., with a healed face. (G.L.O. record)
A larch, 14 ins. diam., bears N71°W, 21.8 ft. dist., with a healed face. (B.L.M. record)

- III. Painted bearing trees and attached Land Survey Monument and Bearing Tree signs.

Magnetic Declination: 20° East



SKETCH OF CORNER

CERTIFICATE OF CORNER RECORDATION

I, Thomas M. Hommel certify the information shown herein is true and correct.

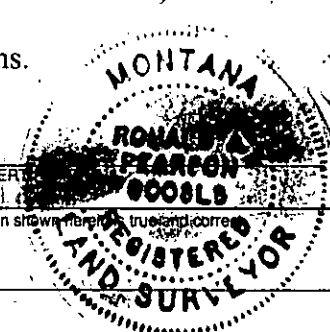
I, Ronald A. Pearson certify that this Corner Record correctly represents work performed by me or under my direction in compliance with the "Corner Recordation Act" (70-22-101, et seq., M.C.A.)

[Signature]
Signature of Surveyor & Seal

Date: 3/16/98

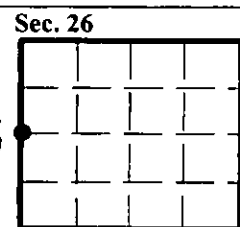
Reg. No.: 9008LS

Employer: U.S. FOREST SERVICE



Office of Clerk and Recorder, County of Lincoln. This "corner record" was filed for record on 7-1-98 and was noted on the cross-index plat and is assigned page No. 10125 in book No. _____.

Coral M. Cummings by DLS
County Official



• - corner this sheet