

# CERTIFIED CORNER RECORDATION

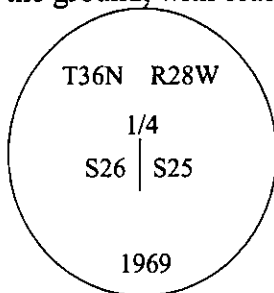
Corner 1/4 Secs. 25 & 26 T. 36N R. 28W P.M., MT Lincoln County

- I. 1903 G.L.O. Original Record by Gordon B. Smith et. al.: Set a fir post, 3 ft. long, 3 ins. square, 24 ins. in the ground, for 1/4 sec. cor., mkd. "1/4 S" on W. and "25" on E. face.

Established two bearing trees:

A tamarack, 8 ins. diam., bears N76 1/2°E, 53 lks. dist., mkd. "1/4 S25 BT".  
A tamarack, 24 ins. diam., bears S76 1/2°W, 50 lks. dist., mkd. "1/4 S26 BT".

1969 B.L.M. Remonumentation Record by Roy G. Leedy: The 1/4 sec. cor. of secs. 25 and 26, as determined from the remains of the original bearing trees. At the corner point, set an iron post, 30 ins. long, 2 1/2 ins. diam., 24 ins. in the ground, with brass cap mkd. as shown.



Established two new bearing trees:

A pine, 10 ins. diam., bears N06°E, 82 lks. dist., mkd. "1/4 S25 BT".  
A larch, 7 ins. diam., bears N15 1/2°W, 97 lks. dist., mkd. "1/4 S26 BT".

Raise a collar of stone, 2 ft. diam., around the iron post. This corner is situated on the N. edge of Forest Service Rd. No. 856, bearing E. and W.

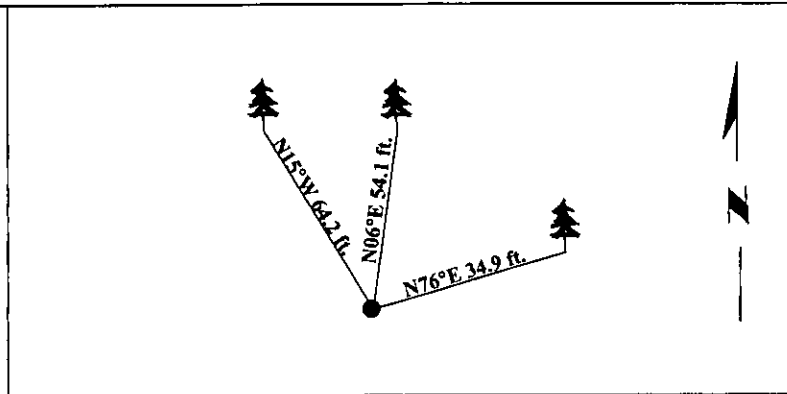
- II. Found a 2 1/2 in. diam. iron pipe, protruding 3 ins. above ground, with a 3 1/4 in. diam. B.L.M. brass cap mkd. as shown.

from which:

A pine, 20 ins. diam., bears N06°E, 54.1 ft. dist., with a healed face. (B.L.M. record)  
A larch stump, bears N76°E, 34.9 ft. dist., with "S25 BT" visible. (G.L.O. record)  
A larch, 10 ins. diam., bears N15°W, 64.2 ft. dist., with visible scribing. (B.L.M. record)

- III. Painted bearing trees and attached Land Survey Monument and Bearing Tree signs.

Magnetic Declination: 20° East



SKETCH OF CORNER

CERTIFICATION

I. Thomas M. Hommel  
certify the information shown herein is true and correct.

I. Ronald A. Pearson  
certify that this Corner Record correctly represents work performed by me or under my direction in compliance with the "Corner Recordation Act" (70-22-101, et seq., M.C.A.)

Signature of Surveyor & Seal

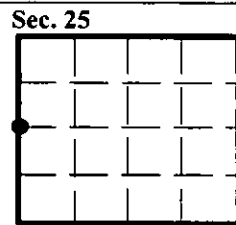
Date: 3/16/98

Reg. No.: 9008LS

Employer: U.S. FOREST SERVICE

Office of Clerk and Recorder, County of Lincoln. This "corner record" was filed for record on 7-1-98 and was noted on the cross-index plat and is assigned page No. 10124 in book No. \_\_\_\_\_.

Coral M. Cummings, Deb  
County Official



• - corner this sheet