

# CERTIFIED CORNER RECORDATION

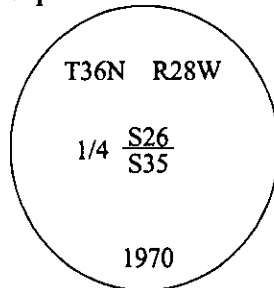
Corner 1/4 Secs. 26 & 35 T. 36N R. 28W P.M., MT Lincoln County

- I. 1903 G.L.O. Original Record by Gordon B. Smith et. al.: Set a washed boulder, 18x10x3 ins., 12 ins. in the ground, for 1/4 sec. cor., mkd. "1/4" on N. face.

Established two bearing trees:

- A fir, 5 ins. diam., bears S29 1/2°E, 20 lks. dist., mkd. "1/4 S35 BT".  
A tamarack, 12 ins. diam., bears N29°W, 9 lks. dist., mkd. "1/4 S26 BT".

1970 B.L.M. Remonumentation Record by Joseph E. French: The 1/4 sec. cor. of secs. 26 and 35, monumented with a washed boulder, 18x10x3 ins., firmly set, mkd. "1/4" on the N. face and witnessed by the remains of the original bearing trees. At the corner point, set an iron post, 30 ins. long, 2 1/2 ins. diam., 24 ins. in the ground, with brass cap mkd. as shown.



Established two new bearing trees:

- A pine, 14 ins. diam., bears N23°E, 49 lks. dist., mkd. "1/4 S26 BT".  
A fir, 10 ins. diam., bears S1/2°E, 59 lks. dist., mkd. "1/4 S35 BT".

Bury the original stone alongside the iron post.

- II. Found a 2 1/2 in. diam. iron pipe, protruding 6 ins. above ground, with a 3 1/4 in. diam. B.L.M. brass cap mkd. as shown.

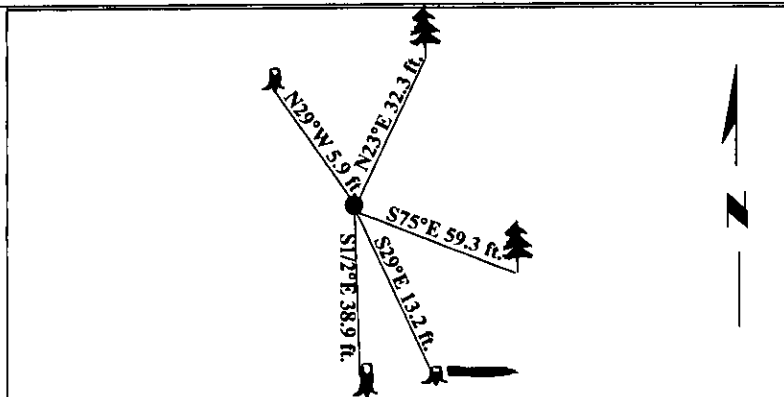
from which:

- A pine, 19 ins. diam., bears N23°E, 32.3 ft. dist., with a healed face. (B.L.M. record)  
A fir (high stump), 13 ins. diam., bears S1/2°E, 38.9 ft. dist., with a healed face. (B.L.M. record)  
Rotten remains of stump and log, bears S29°E, 13.2 ft. dist., visible face. (G.L.O. record)  
A stump, bears N29°W, 5.9 ft. dist., with "1/4 S26 BT" visible. (G.L.O. record)

- III. Established one new bearing tree:

A fir, 12 ins. diam., bears S75°E, 59.3 ft. dist., mkd. "1/4 S35 BT".

Painted bearing trees and attached Land Survey Monument and Bearing Tree signs.  
Magnetic Declination: 20° East



SKETCH OF CORNER

CERTIFICATION

I, Thomas M. Hommel  
certify the information shown on this record.

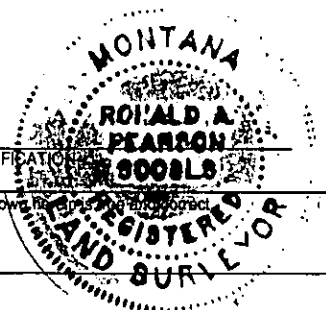
I, Ronald A. Pearson  
certify that this Corner Record correctly represents work performed by me or under my direction in compliance with the "Corner Recordation Act" (70-22-101, et seq., M.C.A.)

Signature of Surveyor & Seal

Date: 3/18/98

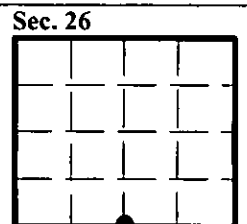
Reg. No.: 9008LS

Employer: U.S. FOREST SERVICE



Office of Clerk and Recorder, County of Lincoln. This "corner record" was filed for record on 7-1-98 and was noted on the cross-index plat and is assigned page No. 10122 in book No. \_\_\_\_\_.

Carol M. Cummings By sub  
County Official



● - corner this sheet