

CERTIFIED CORNER RECORDATION

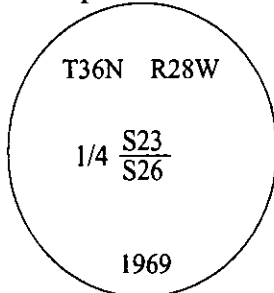
Corner 1/4 Secs. 23 & 26 T. 36N R. 28W P.M., MT Lincoln County

- I. 1903 G.L.O. Original Record by Gordon B. Smith et. al.: Set a lava stone, 13x9x8 ins., 9 ins. in the ground, for 1/4 sec. cor., mkd. "1/4" on N. face.

Established two bearing trees:

A fir, 9 ins. diam., bears N05°E, 14 lks. dist., mkd. "1/4 S23 BT".
A fir, 9 ins. diam., bears S57 1/2°W, 10 lks. dist., mkd. "1/4 S26 BT".

1969 B.L.M. Remonumentation Record by Roy G. Leedy: The 1/4 sec. cor. of secs. 23 and 26, monumented with a lava stone, 12x8x8 ins., firmly set, mkd. "1/4" on the E. face and witnessed by the remains of the original bearing trees. At the corner point, set an iron post, 30 ins. long, 2 1/2 in. diam., 24 ins. in the ground, with the brass cap mkd. as shown.



Established two new bearing trees:

A fir, 6 ins. diam., bears N33 1/4°E, 35 lks. dist., mkd. "1/4 S23 BT".
A fir, 12 ins. diam., bears S59°E, 28 lks. dist., mkd. "1/4 S26 BT".

Bury the original stone alongside and raise a collar of stone, 2.0 ft. diam., around the iron post.

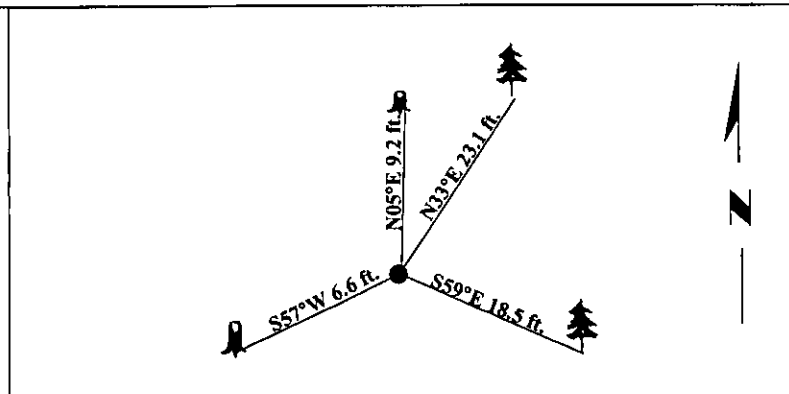
- II. Found a 2 1/2 in. diam. iron pipe, protruding 8 ins. above ground, with a 3 1/4 in. diam. B.L.M. brass cap mkd. as shown.

from which:

Rotten remains, bears N05°E, 9.2 ft. dist., with "S2" visible. (G.L.O. record)
A fir, 8 ins. diam., bears N33°E, 23.1 ft. dist., with a healed face. (B.L.M. record)
A fir, 15 ins. diam., bears S59°E, 18.5 ft. dist., with a healed face. (B.L.M. record)
A fir stump, bears S57°W, 6.6 ft. dist., with "4 S26 BT" visible. (G.L.O. record)

- III. Painted bearing trees and attached Land Survey Monument and Bearing Tree signs.

Magnetic Declination: 20° East



SKETCH OF CORNER

CERTIFICATION

I, Thomas M. Hommel
certify the information shown herein is true and correct.

I, Ronald A. Pearson
certify that this Corner Record correctly represents work performed by me or under my direction in compliance with the "Corner Recordation Act" (70-22-101, et seq., M.C.A.)

Signature of Surveyor & Seal

Date: 3/23/98

Reg. No.: 9008LS

Employer: U.S. FOREST SERVICE

Office of Clerk and Recorder, County of Lincoln. This "corner record" was filed for record on 7-1-98 and was noted on the cross-index plat and is assigned page No. 10121 in book No. _____.

Carol M. Hummingbird
County Official

