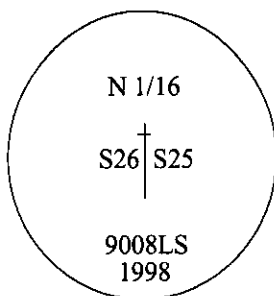


CERTIFIED CORNER RECORDATION

Corner N 1/16 Secs. 25 & 26 T. 36N R. 28W P.M., MT Lincoln County

- I. No previous history.
- II. No history found.
- III. Set by survey, a 3/4 in. diam. x 30 ins. long aluminum rod, 24 ins. in the ground, with a 3 1/4 in. diam. aluminum cap, mkd. as shown, with a "+" for the exact corner point.



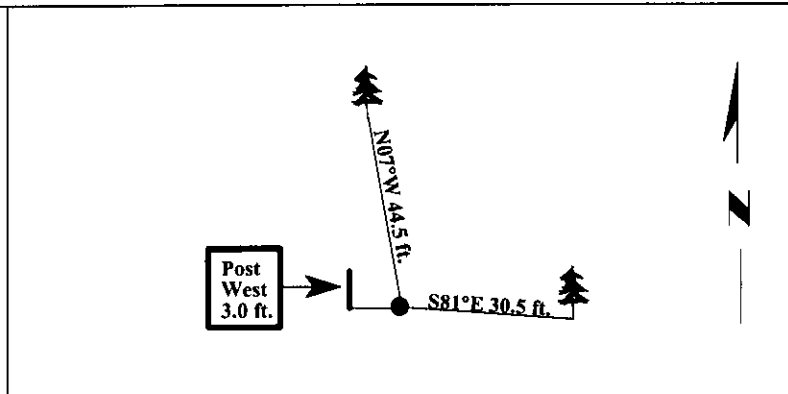
Established two bearing trees and one steel guard post:

- A fir, 12 ins. diam., bears S81°E, 30.5 ft. dist., scribed "N1/16 S25 BT".
- A fir, 7 ins. diam., bears N07°W, 44.5 ft. dist., scribed "N1/16 S26 BT".
- A 6 ft. steel guard post, bears West, 3.0 ft. distance from the corner monument.

Painted bearing trees and attached Land Survey Monument and Bearing Tree signs.
Attached Land Survey Monument and Property Boundary decals to the post.



Magnetic Declination: 20° East



SKETCH OF CORNER

I. Rex O. Rice
certify the information shown herein is true and correct.

I. Ronald A. Pearson
certify that this Corner Record correctly represents work performed by me or under my direction in compliance with the "Corner Recordation Act" (70-22-101, et seq., M.C.A.)

Ronald A. Pearson
Signature of Surveyor & Seal

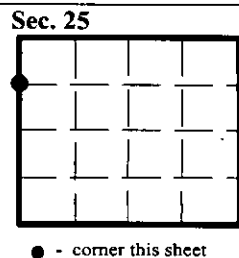
Date: 4/22/98

Reg. No.: 9008LS

Employer: U.S. FOREST SERVICE

Office of Clerk and Recorder, County of Lincoln. This "corner record" was filed for record on 7-1-98 and was noted on the cross-index plat and is assigned page No. 10117 in book No. _____.

Coral M. Cumming By OEB
County Official



● - corner this sheet