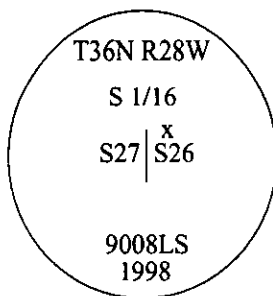


CERTIFIED CORNER RECORDATION

Corner S 1/16 Secs. 26 & 27 T. 36N R. 28W P.M., MT Lincoln County

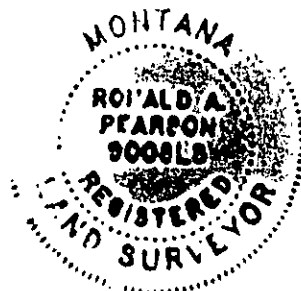
- I. No previous history.
- II. No history found.
- III. Set by survey, a 3/4 in. diam. x 30 ins. long aluminum rod, 27 ins. in the ground, with a 3 1/4 in. diam. aluminum cap, mkd. as shown, with a "x" for the exact corner point.



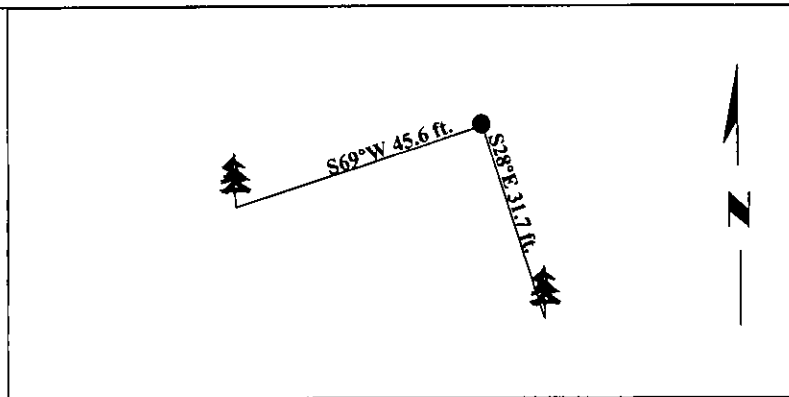
Established two bearing trees:

- A fir, 10 ins. diam., bears S28°E, 31.7 ft. dist., scribed "S1/16 S26 BT".
- A fir, 11 ins. diam., bears S69°W, 45.6 ft. dist., scribed "S1/16 S27 BT".

Painted bearing trees and attached Land Survey Monument and Bearing Tree signs.



Magnetic Declination: 20° East



SKETCH OF CORNER

CERTIFICATION

I, Rex O. Rice
certify the information shown herein is true and correct.

I, Ronald A. Pearson
certify that this Corner Record correctly represents work performed by me or under my direction in compliance with the "Corner Recordation Act" (70-22-101, et seq., M.C.A.)

Ronald A. Pearson
Signature of Surveyor & Seal

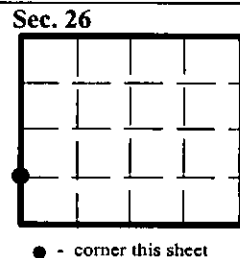
Date: 4/23/98

Reg. No.: 9008LS

Employer: U.S. FOREST SERVICE

Office of Clerk and Recorder, County of Lincoln. This "corner record" was filed for record on 7-1-98 and was noted on the cross-index plat and is assigned page No. 10114 in book No. _____.

Coral M. Cummings By SLS
County Official



• - corner this sheet