

INSTRUCTIONS

1. Original and/or subsequent record used to evaluate the corner position.
2. Description of evidence found, note discrepancies in the record, state method of establishing lost or obliterated corners.
3. Description of monument and accessories set to perpetuate the corner position.
4. Sketch of corner, show all pertinent data which can best be shown in a sketch example, corner marking, topography ties, position of accessories, etc.
5. Certification must be signed and sealed by Land Surveyor registered in the State of Montana.
6. Fill in Cross Index & Section Diagram at bottom of sheet.

CERTIFIED CORNER RECORDATION

Corner Cor. of Secs. 32 & 33 only T. 36 N. R. 27 W. P.M.M. Lincoln County

I. 1893 original G.L.O. record by Peter McCardell & Abram L. Jaqueth: Set stone and marked 4 bearing trees.

1904 G.L.O. resurvey record by Abraham L. Rinearson & Gordon C. Smith: Reset stone & marked 4 bearing trees.

1911 G.L.O. resurvey record by Lewellyn D. Lyman & Royston C. Durnford: Obliterate marks on two bearing trees, corner now refers to two sections only.

1969 B.L.M. remonumentation record by Roy G. Leedy: "The cor. of secs. 32 and 33, on the S. bdy. of the Tp., monumented with a limestone, 15 x 6 x 6 ins., firmly set, mkd. with 4 notches on the E. and 2 notches on the W. edges, and and witnessed by the remains of the original bearing trees:

A stump, bears S44° E, 19 lks. dist., with no visible marks.

A snag, 14 ins. diam., bears N59° W, 27 lks. dist., with illegible mks.

At the corner point

Set an iron post, 30 ins. long, 2 1/2 ins. diam., 24 ins. in the ground with brass cap mkd.

T36N R27W
S32 | S33
S4
T35N R27W
1969

from which

A fir, 9 ins. diam., bears N63 3/4° E, 6 lks. dist., mkd. T36N R27W S33 BT.

A fir, 7 ins. diam., bears N39 1/4° W, 8 lks. dist., mkd. T36N R27W S32 BT.

Bury the original stone alongside the iron post."

II. Found a 2 1/2 ins. diam. iron pipe, 7 ins. out of ground with 3 1/4 ins. diam. B.L.M. brass cap marked as shown above, from which

A fir, 9 ins. diam., bears N64° E, 4.2 ft. (6 lks.) dist., with visible scribe marks.

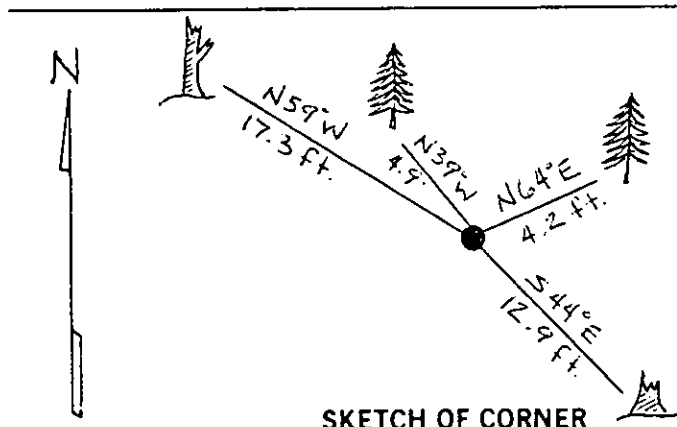
A rotten fir stump, 7 ins. diam., bears S44° E, 12.9 ft. (19 lks.) dist., chop marks.

A rotten fir snag, bears N59° W, 17.3 ft. (26 lks.) dist., chop marks.

A fir, 8 ins. diam., bears N39° W, 4.9 ft. (7 lks.) dist., with visible scribe marks.

III. Painted red bands around the bearing trees and attached Land Survey Monument and Bearing Tree signs.

Magnetic Declination: 20° East



SKETCH OF CORNER

CERTIFICATION

1. Rex Rice

certify the information shown herein is true and correct.

Rex O. Rice

Signature Ground Party: *Ronald A. Pearson*

1. Ronald A. Pearson

certify that this Corner Record correctly represents work performed by me or under my direction in compliance with the Montana Corner Recordation Act, 1911, et seq., M.C.A.

Ronald A. Pearson

Signature of Surveyor & Seal:

Date: 11/13/95 Reg. No. 90081S

Employer: U.S. FOREST SERVICE

Office of Clerk and Recorder, County of LINCOLN. This "corner record" was filed for record on AUG21,1997

was noted on the cross-index plat and is assigned page No. 9968, in book No. CORAL M. CUMMINGS By DEP

County Official

Cross Index No. Z-09 T. 36N R. 27W P.M.M.

Sec. 32

• - corner this sheet