

INSTRUCTIONS

1. Original and/or subsequent record used to evaluate the corner position.
2. Description of evidence found, note discrepancies in the record, state method of establishing lost or obliterated corners.
3. Description of monument and accessories set to perpetuate the corner position.
4. Sketch of corner, show all pertinent data which can best be shown in a sketch example, corner marking, topography (lies, position of accessories, etc.
5. Certification must be signed and sealed by Land Surveyor registered in the State of Montana.
6. Fill in Cross Index & Section Diagram at bottom of sheet.

CERTIFIED CORNER RECORDATION

Corner Cor. of Secs. 19, 30, 24, 25 T. 36 N. R. 27 W. P.M.M. Lincoln County

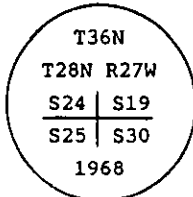
I. 1893 original G.L.O. record by Peter McCardell & Abram L. Jaqueth: Set stone and marked four bearing trees.

1904 G.L.O. resurvey record by Abraham L. Rinearson & Gordon C. Smith: Reset Cor. marked four bearing trees, destroyed old corner.

1968 remonumentation B.L.M. record by Woodrow E. Damm et al: "The cor. of secs. 19, 24, 25 and 30, on the W. bdy of the Tp., as determined from the remains of the original bearing trees:

At the corner point

Set an iron post, 30 ins. long, 2 1/2 ins. diam., 24 ins. in the ground, with brass cap mkd.



from which

The original bearing trees:

- A fir, 8 ins. diam., bears S72 3/4° W, 42 lks. dist., mkd. T36N R28W S25 BT. (record)
- A snag, 7 ins. diam., bears N20 3/4° W, 25 lks. dist., mkd. T36N R28W S24 BT. (record)

The new bearing trees:

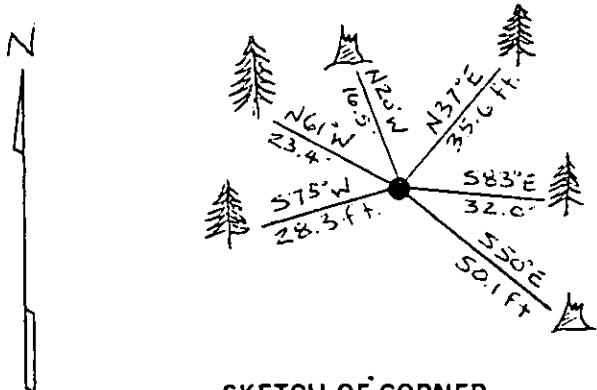
- A fir, 12 ins. diam., bears N37° E, 53 lks. dist., mkd. T36N R27W S19 BT.
- A fir, 9 ins. diam., bears S83° E, 49 lks. dist., mkd. T36N R27W S30 BT.
- A larch, 7 ins. diam., bears N61° W, 35 lks. dist., mkd. T36N R28W S24 BT.

II. Found a 2 1/2 ins. diam. iron pipe, 9 ins. out of ground with 3 1/4 ins. diam. B.L.M. brass cap marked as shown above, from which

- A fir, 12 ins. diam., bears N37° E, 35.6 ft. (54 lks.) dist., mkd. T36N R BT.
- A fir, 9 ins. diam., bears S83° E, 32.0 ft. (48 lks.) dist., healed face.
- A rotten fir stump, bears S50° E, 50.1 ft. (76 lks.) dist., no visible scribe.
- A fir, 12 ins. diam., bears S75° W, 28.3 ft. (43 lks.) dist., visible scribe.
- A larch, 7 ins. diam., bears N61° W, 23.4 ft. (35 lks.) dist., mkd. N R28W S24 BT.
- A fir stump, 7 ins. diam., bears N20° W, 16.5 ft. (25 lks.) dist., mkd. N R28W 25 BT.

III. Painted red bands around the bearing trees and attached Land Survey Monument and Bearing Tree signs.

Magnetic Declination: 20° East



SKETCH OF CORNER

Rex Rice

certify the information shown herein is true and correct

Rex O. Rice

Signature Ground Party

Ronald A. Pearson

I, certify that this Corner Record correctly represents work performed by me or under my direction in compliance with the "Corner Recordation Act" of 1901, et seq., M.C.A.

Signature of Surveyor & Seal

Date: 11/13/95 Reg. No. 9008LS

Employer: U.S. FOREST SERVICE

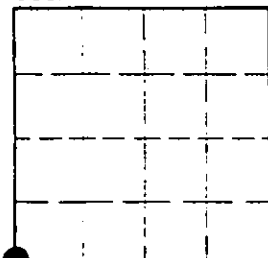
Office of Clerk and Recorder, County of LINCOLN. This "corner record" was filed for record on AUG21, 1997

was noted on the cross-index plat and is assigned page No. 9966 in book No. CORAL M. CUMMINGS

County Official *[Signature]*

R-01 36 N 27 W
Cross Index No. T. R. P.M.M.

Sec. 19



• corner this sheet