

INSTRUCTIONS

1. Original and/or subsequent record used to evaluate the corner position.
2. Description of evidence found, note discrepancies in the record, state method of establishing lost or obliterated corners.
3. Description of monument and accessories set to perpetuate the corner position.
4. Sketch of corner, show all pertinent data which can best be shown in a sketch example, corner marking, topography ties, position of accessories, etc.
5. Certification must be signed and sealed by Land Surveyor registered in the State of Montana.
6. Fill in Cross Index & Section Diagram at bottom of sheet.

CERTIFIED CORNER RECORDATION

Cor. of Secs. 31 & 32 only

36 N..

27 W..

Lincoln

Corner _____ T. _____ R. _____ P.M.M. _____ County

I. 1893 original G.L.O. record by Peter McCardell & Abram L. Jaqueth: Set stone and marked 4 bearing trees.

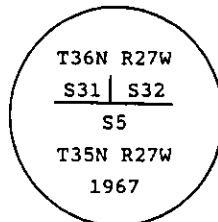
1904 G.L.O. resurvey record by Abraham L. Rinearson & Gordon C. Smith: Reset stone & marked 4 bearing trees

1911 G.L.O. resurvey record by Lewellyn D. Lyman and Royston C. Durnford: Obliterated marks on two bearing trees, corner now refers to two sections only.

1967 remonumentation B.L.M. record by Woodrow E. Damm et al: "The cor. of secs. 31 and 32, on the S. bdy. of the Tp. monumented with a limestone, 12 x 4 x 3 ins., firmly set, mkd. with 1 groove on the W. and 5 grooves on the E. faces, and and witnessed by the remains of the original bearing trees:

At the corner point

Set an iron post, 30 ins. long, 2 1/2 ins. diam., 24 ins. in the ground with brass cap mkd.



from which

The original bearing trees:

- A tamarack stump, 12 ins. diam., bears N43 1/4° E, 111 lks. dist., mkd. T36N R27W S32. (record)
- A tamarack stump, 9 ins. diam., bears N8° W, 27 lks. dist., mkd. T36N R27. (record)

The new bearing trees:

- A fir, 16 ins. diam., bears N5 1/2° E, 129 lks. dist., mkd. X BT.
- A fir, 8 ins. diam., bears N26° W, 42 lks. dist., mkd. T36N R27W S31 BT.

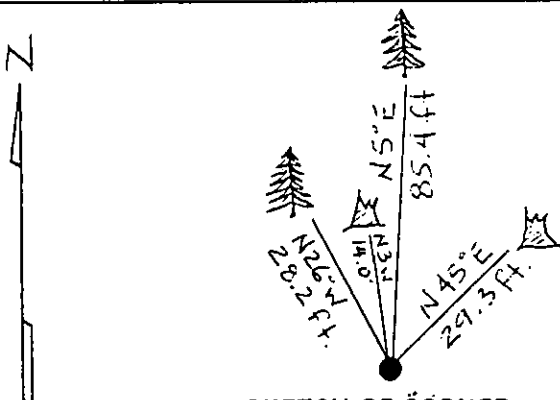
Bury the original stone alongside the iron post."

II. Found a 2 1/2 ins. diam. iron pipe, 2 ins. out of ground with 3 1/4 ins. diam. B.L.M. brass cap marked as shown above, from which

- A fir, 24 ins. diam., bears N5° E, 85.4 ft. (129 lks.) dist.
- A rotten stump, bears N45° E, 29.3 ft. (44 lks.) dist., no visible marks.
- A fir, 16 ins. diam., bears N26° W, 28.2 ft. (43 lks.) dist., healed face.
- A rotten stump, bears N3° W, 14.0 ft. (21 lks.) dist., mkd. T36N R27.

III. Painted red bands around the bearing trees and attached Land Survey Monument and Bearing Tree signs.

Magnetic Declination: 20° East



SKETCH OF CORNER

Rex Rice

CERTIFICATION

I. certify the information shown herein is true and correct.

Rex O. Rice

Signature Ground Party Chief

Ronald A. Pearson

I. certify that this Corner Record correctly represents work performed by me or under my direction in compliance with the "Corner Recordation Act" (70-2710), et seq., M.C.A.

Signature of Surveyor & Seal

Date: 11/13/95 Reg. No. 9008LS

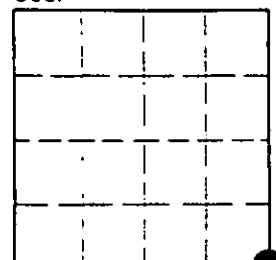
Employer: U.S. FOREST SERVICE

Office of Clerk and Recorder, County of LINCOLN This "corner
 record" was filed for record on AUG 21, 1997
 was noted on the cross-index plat and is assigned page No. 9963 in
 book No. _____

CORAL M. CUMMINGS By OLB
 County Official

Cross Index No. Z-05 T. 36N R. 27W P.M.M.

Sec. 31



• corner this sheet