

## INSTRUCTIONS

1. Original and/or subsequent record used to evaluate the corner position.
2. Description of evidence found, note discrepancies in the record, state method of establishing lost or obliterated corners.
3. Description of monument and accessories set to perpetuate the corner position.
4. Sketch of corner, show all pertinent data which can best be shown in a sketch example, corner marking, topography ties, position of accessories, etc.
5. Certification must be signed and sealed by Land Surveyor registered in the State of Montana.
6. Fill in Cross Index & Section Diagram at bottom of sheet.

## CERTIFIED CORNER RECORDATION

Corner E 1/16, Sec. 32 T. 36 N. R. 27 W. P.M.M. Lincoln County

I. No previous record.

II. No evidence found.

III. At the calculated position shown by Certificate of Survey No. 2387 filed at Lincoln County Courthouse, Montana; set a 3/4 in. diam. by 30 ins. long aluminum rod, 24 ins. in the ground with 3 1/4 in. diam., U.S.D.A., Forest Service aluminum cap, marked as shown:

T36N R27W  
E 1/16 S32  
T35N R27W  
9008LS  
1995

from which

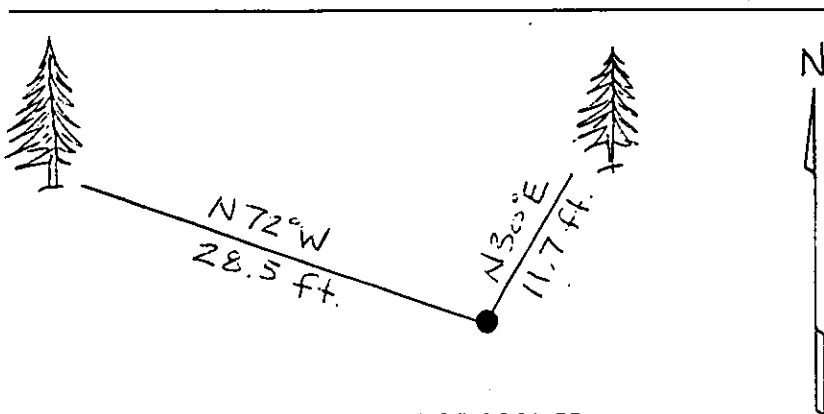
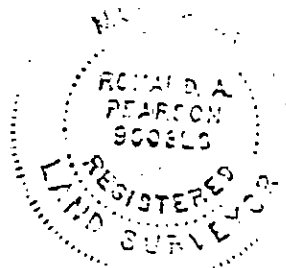
A larch, 7 ins. diam., bears  $N30^{\circ}E$ , 11.7 ft. dist., mkd. X BT.

A larch, 9 ins. diam., bears  $N72^{\circ}W$ , 28.5 ft. dist., mkd. E 1/16 S32 BT.

Painted red bands around the bearing trees and attached Land Survey Monument and Bearing Tree signs.

Set a 6 ft. galvanized steel guard post with Land Survey Marker & Property Boundary decals. North, 3.0 ft.

Magnetic Declination:  $20^{\circ}$  East



SKETCH OF CORNER

## CERTIFICATION

Jeff Hintz

I, Jeff Hintz  
certify the information shown herein is true and correct.

Signature Ground Party Chief

Ronald A. Pearson

I, Ronald A. Pearson  
certify that this Corner Record correctly represents work performed  
by me or under my direction in compliance with the "Corner  
Recordation Act" (70-101) et seq., M.C.A.

Signature of Surveyor & Seal

Date: 11/14/95 Reg. No. 9008LS

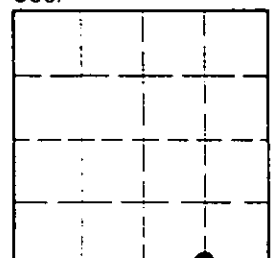
Employer: U.S. FOREST SERVICE

Office of Clerk and Recorder, County of LINCOLN. This "corner  
record" was filed for record on AUG 21, 1997  
was noted on the cross-index plat and is assigned page No. 9958, in  
book No. \_\_\_\_\_

CORAL M. CUMMINGS By DLB  
County Official

Cross Index No. Z-08 T. 36N R. 27W PMM

Sec. 32



• corner this sheet