

INSTRUCTIONS

1. Original and/or subsequent record used to evaluate the corner position.
2. Description of evidence found, note discrepancies in the record, state method of establishing lost or obliterated corners.
3. Description of monument and accessories set to perpetuate the corner position.
4. Sketch of corner, show all pertinent data which can best be shown in a sketch example, corner marking, topography ties, position of accessories, etc.
5. Certification must be signed and sealed by Land Surveyor registered in the State of Montana.
6. Fill in Cross Index & Section Diagram at bottom of sheet.

CERTIFIED CORNER RECORDATION

Corner 1/4 Cor. Secs. 31 & 32 T. 36 N. R. 27 W. P.M.M. Lincoln County

- I. 1903 original G.L.O. record by Abraham L. Rinearson & Gordon C. Smith: Set stone and marked two bearing trees.

1969 remonumentation B.L.M. record by Roy G. Leedy: "The 1/4 sec. cor. of secs. 31 and 32, monumented with a broken limestone, firmly set, visibly mkd. 4, and witnessed by the remains of the original bearing trees:

A stump, bears N79 1/2° E, 125 lks. dist., mkd. 1/4 S32 BT.
A stump, bears S11 1/2° W, 51 lks. dist., mkd. BT.

At the corner point

Set an iron post, 30 ins. long, 2 1/2 ins. diam., 24 ins. in the ground with brass cap mkd.

T36N R27W
1/4
S31 | S32
1969

from which

A fir, 10 ins. diam., bears S51° E, 28 lks. dist., mkd. 1/4 S32 BT.
A fir, 18 ins. diam., bears S65° W, 18 lks. dist., mkd. 1/4 S31 BT.

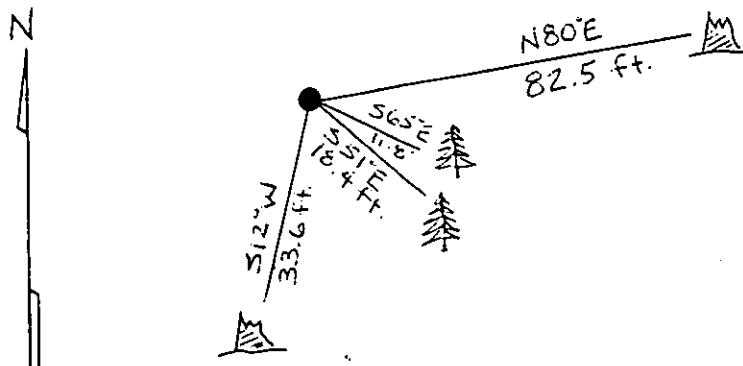
Bury the original stone alongside and raise a collar of stone, 3 ft. diam., around the iron post."

- II. Found a 2 1/2 ins. diam. iron pipe, in a mound of stone, 6 ins. out of ground with 3 1/4 ins. diam. B.L.M. brass cap marked as shown above, from which

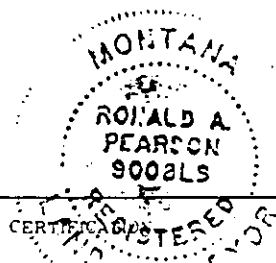
A rotten pine stump, bears N80° E, 82.5 ft. (125 lks.) dist., mkd. S32 BT.
A fir, 21 ins. diam., bears S65° E, 11.8 ft. (18 lks.) dist., healed face
A fir, 11 ins. diam., bears S51° E, 18.4 ft. (28 lks.) dist., healed face
A fir stump, 28 ins. diam., bears S12° W, 33.6 ft. (51 lks.) dist., face, no visible scribe.

- III. Painted red bands around the bearing trees and attached Land Survey Monument and Bearing Tree signs.

Magnetic Declination: 20° East



SKETCH OF CORNER

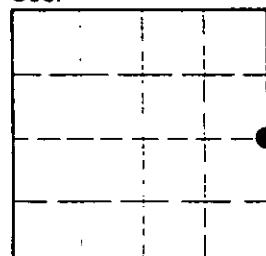


1. Rex Rice
certify the information shown herein is true and correct.
Rex O. Rice
Signature Ground Party Chief
2. Ronald A. Pearson
certify that this Corner Record correctly represents work performed by me or under my direction in compliance with the "Corner Recordation Act" (70-20-101, et seq., M.C.A.)
Ronald A. Pearson
Signature of Surveyor & Seal
Date: 11/9/95 Reg. No. 9008LS
Employer: U.S. FOREST SERVICE

Office of Clerk and Recorder, County of LINCOLN. This "corner record" was filed for record on AUG 21, 1997 was noted on the cross-index plat and is assigned page No. 9957 in book No. CORAL M. CUMMINGS County Official B. J. B.

Cross Index No. X-05 T. 36N R. 27W P.M.M.

Sec. 31



• - corner this sheet