

INSTRUCTIONS

1. Original and/or subsequent record used to evaluate the corner position.
2. Description of evidence found, note discrepancies in the record, state method of establishing lost or obliterated corners.
3. Description of monument and accessories set to perpetuate the corner position.
4. Sketch of corner, show all pertinent data which can best be shown in a sketch example, corner marking, topography ties, position of accessories, etc.
5. Certification must be signed and sealed by Land Surveyor registered in the State of Montana.
6. Fill in Cross Index & Section Diagram at bottom of sheet.

CERTIFIED CORNER RECORDATION

Corner Cor. of Secs. 29, 30, 31, 32 T. 36 N. R. 27 W. P.M.M. Lincoln County

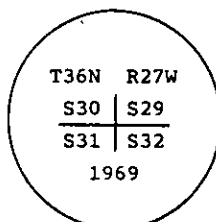
- I. 1903 original G.L.O. record by Abraham L. Rinearson & Gordon C Smith: Set stone and marked four bearing trees.

1969 remonumentation B.L.M. record by Roy G. Leedy: "The cor. of secs. 29, 30, 31 and 32, monumented with a porphyry stone, 16 x 12 x 10 ins., firmly set, mkd. 5 notches on the E. and 1 notch on the S. edges, and witnessed by the remains of the original bearing trees:

- A fir, 10 ins. diam., bears N57 1/4° E. 33 lks. dist., mkd. T36N R27W S29 BT.
 A stump, bears S72 3/4° E. 42 lks. dist., mkd. T36N R27W S32 BT.
 A stump, bears S54 1/2° W. 60 lks. dist., mkd. T36N R27W S31 BT.
 A fir, bears N58° W. 30 lks. dist., mkd. with a burnt blaze.

At the corner point

Set an iron post, 30 ins. long, 2 1/2 ins. diam., 24 ins. in the ground, with brass cap mkd.



from which

- A fir, 6 ins. diam., bears N37 3/4° E. 40 lks. dist., mkd. T36N R27W S29 BT.
 A larch, 6 ins. diam., bears S3° E. 80 lks. dist., mkd. T36N R27W S32 BT.
 A fir, 6 ins. diam., bears S1° W. 59 lks. dist., mkd. T36N R27W S31 BT.

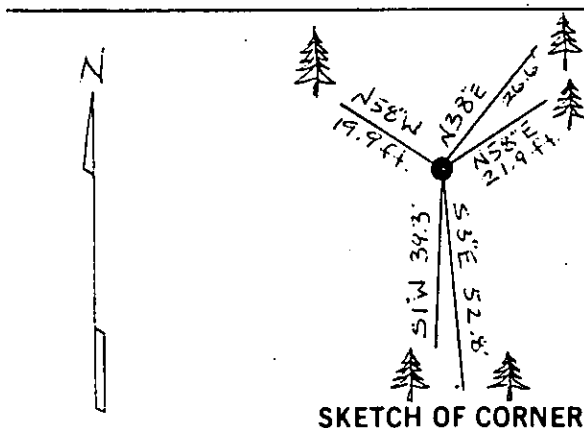
Bury the original stone alongside and raise a collar of stone, 2 ft. diam., around the iron post.

- II. Found a 2 1/2 ins. diam. iron pipe, 10 ins. out of ground with 3 1/4 ins. diam. B.L.M. brass cap marked as shown above, from which

- A fir, 5 ins. diam., bears N38° E. 26.6 ft. (40 lks.) dist., healed face
 A fir, 13 ins. diam., bears N58° E. 21.9 ft. (33 lks.) dist., mkd. R27W S29 BT.
 A larch, 6 ins. diam., bears S3° E. 52.8 ft. (80 lks.) dist., healed face.
 A fir, 8 ins. diam., bears S1° W. 39.3 ft. (59 lks.) dist., visible marks.
 A fir, 18 ins. diam., bears N58° W. 19.9 ft. (30 lks.) dist., visible marks.

- III. Painted red bands around the bearing trees and attached Land Survey Monument and Bearing Tree signs.

Magnetic Declination: 20° East



MONTANA
RECORD A.
PEARSON
9008LS

CERTIFICATION

I, Rex Rice
 certify the information shown herein is true and correct.
Rex O. Rice
 Signature Ground Party/Owner
 Ronald A. Pearson
 I, Rex O. Rice
 certify that this Corner Record correctly represents work performed
 by me or under my direction in compliance with the "Corner
 Recordation Act" (70-23101, et seq., M.C.A.)
Rex O. Rice
 Signature of Surveyor & Seal
 Date: 11/9/95 Reg. No. 9008LS
 Employer: U.S. FOREST SERVICE

Office of Clerk and Recorder, County of LINCOLN This "corner
 record" was filed for record on AUG 21, 1997
 was noted on the cross-index plat and is assigned page No. 9956 in
 book No. CORAL M. CUMMINGS County Official By Deb

V-05 36 N 27 W
 Cross Index No. T. R. PMM

Sec. 29

| | | | |
|--|--|--|--|
| | | | |
| | | | |
| | | | |
| | | | |

• corner this sheet